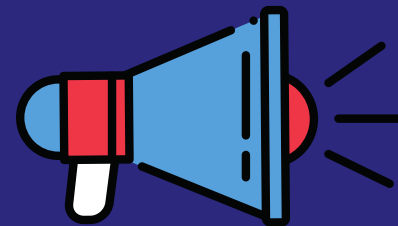


# YOUR VOTE IS YOUR VOICE

WE NEED SOCIAL WORKERS TO VOTE!



## WHY YOU SHOULD CARE



- The NASW Code of Ethics calls on social workers to be politically active.

- Voting can result in greater resources for your community, your clients, and the profession.



- Casting your vote allows your individual voice to be heard, and it amplifies the voice of the social work profession as well.

- Your vote counts, and if everyone votes, election outcomes could be impacted greatly.

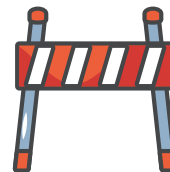


**In the 2016 election, the president won four states by just 1%**

**40%**  
*of people eligible to vote in 2016, did not vote*

## BARRIERS TO OVERCOME

- Discriminatory voting practices still exist nationwide, and they could impact you and the clients you serve.



- Voter suppression disproportionately impacts the poor, people of color, and women.

- Limited access, such as shortage of transportation and long lines at the polls, can keep people from voting.



**Black voters wait twice as long to vote as white voters**

*Racial and Social Justice Collaborative  
MSU School of Social Work  
sw.rsjc@msu.edu*



## THINGS TO KNOW



- Register to vote at your municipality's clerk's office. Find out what to bring and more on registering [here](#).
- This is the first presidential election Michigan residents can take advantage of same day registration. Find more info [here](#).
- Vote 411 is helpful in breaking down your ballot and polling locations. Find Vote 411's website [here](#).
- Refresh your memory on our profession's ethical standards. To ensure your vote aligns with the NASW Code of Ethics, you can reference them [here](#).
- Voting is Social Work. Find out more about the importance of voting as social workers [here](#).