

NEWS

Fall 2012/Winter 2013



INSIDE

2 KEY TO FRONT COVER PHOTOS
3 FROM THE DIRECTOR
6 PROGRAM FEATURES

13 IN THE SPOTLIGHT
17 FACULTY ACTIVITIES
21 ALUMNI NEWS

22 SCHOOL NEWS
27 GIFTS THAT KEEP ON GIVING
28 HELP US STAY CONNECTED

School has drawn world-class experts to MSU

Key to front cover photos, L-R:

Top row:

2012 Alvin Poussaint, MD, Harvard Medical School

2012 Willie F. Tolliver, DSW, MSW, Hunter College Silberman School of Social Work

2012 Steve Burghardt, PhD, MSW, Hunter College Silberman School of Social Work

2012 Virginia Drywater-Whitekiller, EdD, MSW, Northeastern State University

2012 Thalia Gonzalez, JD, Occidental College

2012 Caitlin Ryan, PhD, MSW, San Francisco State University



Second row:

2011 Mark Umbreit, PhD, Center for Restorative Justice & Peacemaking

2011 David Espino, MD, University of Texas Health Science Center

2011 Xavier Amador, PhD, Columbia University Teachers College & LEAP Institute

2010 Mimi Abramovitz, DSW, MSW, Hunter College Silberman School of Social Work

2009 Harry J. Aponte, HPhD, LCSW, LMFT, Drexel University

2009 Eliana Gil, PhD, Childhelp Children's Center

2009 Stephen Madigan, PhD, MSW, MSc, Vancouver School of Narrative Therapy

Third row:

2008 William C. Bell, MSW, Casey Family Programs

2008 Monit Cheung, PhD, MA, LCSW, University of Houston Graduate College of Social Work

2007 Nancy Boyd Webb, DSW, Fordham University

2007 Oliver J. Williams, PhD, University of Minnesota-St. Paul Institute on Domestic Violence in the African American Community

2005 Evan Imber-Black, PhD, Ackerman Institute for Family Therapy

2005 Dottie Ward-Wimmer, RN, MA, LPC, RPT, William Wendt Center for Loss & Healing

Bottom row:

2003 Peggy Papp, MSW, Ackerman Institute for Family Therapy

2000 Carol Mowbray, PhD, University of Michigan School of Social Work

2000 Mattie L. Satterfield, LCSW-C, Child Welfare League of America

2000 Mark Testa, PhD, University of North Carolina

1999 Bernardine Dohrn, JD, Northwestern University School of Law

1999 Carol Williams Spigner, DSW, University of Pennsylvania School of Social Work

1998 Ruth Ellis, Ruth Ellis Center (Detroit)

A sample of other speakers who have come to the MSU School of Social Work (not pictured)

Continuing Education Speakers:

Joan Borysenko, MD, Mind/Body Health Sciences & Claritas Institute

Denise Bronson, PhD, MSW, Ohio State University College of Social Work

Mike Clark, LMSW, International Motivational Interviewing Network of Trainers

Yvette Colón, PhD, ACSW, LMSW, American Pain Foundation

Jorge Delva, PhD, MSW, University of Michigan School of Social Work

Cynthia Edmonds-Cady, PhD, MSW, Illinois State University

Helene Ellis, BS, Author, Kinship Care

Celia Jaes Falicov, PhD, University of California-San Diego

Hector Gonzalez, PhD, Alliant International University, San Diego, CA

Nancy Harold, MSW, LICSW, Emergency Room Crisis Program, St. Paul, MN

Staci Hirsch, PsyD, Neighborhood Service Organization Addiction Treatment Services Program

Linda Homeyer, PhD, University of North Texas

Ellen B. Kagen, MSW, Georgetown University Center for Child & Human Development

Caelan Kuban, LMSW, National Institute for Trauma & Loss in Children

Susan Lebold, JD, MSW, Organizational Management Consultant & Trainer

Myungsuk Lee, PhD, Sungkyunkwan University, Seoul

Gordon Limb, PhD, MSW, Brigham Young University School of Social Work

Cathy Malchiodi, PhD, ATR-BC, LPCC, LPAT, Art Therapy Without Borders

Dr. Jack Menke, Anton de Koom University of Suriname

Chris Mruk, PhD, Bowling Green State University Fireland College

Krishna Samantrai, PhD, LCSW, Smith College School of Social Work & California State University

Robert Taylor, PhD, MSW, University of Michigan School of Social Work

Michigan Indian Day Speakers:

Robert Antone, Oneida Elder (Detroit)

Lois Beardslee, MA, Northwestern Michigan College

Ann Belleau, Bay Mills Indian Community

Jerilyn Church, MSW, Minnecoujou Lakota, Cheyenne River Sioux Tribe

G. Paul Cloutier, Director, (Michigan) Native American Affairs

Dr. Kip Coggins, Grand Traverse Band of Ottawa & Chippewa Indians

Don Day, EdD, Leech Lake Band of Ojibwe

Priscilla A. Day, EdD, Leech Lake Band of Ojibwe

Patricia Farrell, PhD, MSW, Taos Pueblo

Josett French, MD, Sault Ste. Marie Tribe of Chippewa Indians

Eva Kennedy, Oneida Elder (Detroit)

Gordon Limb, PhD, MSW, Winnebago/Ho-Chunk

Bill Memberto, MSW, Little River Band of Ottawa Indians Family Services

Susan Montroy, Saginaw Chippewa Indian Tribe

Warren Petoskey, Little Traverse Bay Bands of Odawa Indians of Michigan

Emily Proctor, MSW, Little Traverse Bay Bands of Odawa Indians of Michigan

Dan Radawski, MD, Saginaw Chippewa Indian Tribe

Le Anne Silvey, PhD, LMLSW, ACSW, Acting Director, MSU Indian Studies

Lynn Swan, MD, MSU Geriatric Education Center of Michigan



Gary R. Anderson

Dear Alumni and Friends, I have recently sent this letter to our students, informing them of my upcoming transition.

MICHIGAN STATE UNIVERSITY

Dear MSU Social Work Students:

I am writing to let you know that the 2012–2013 academic year will be my final year as the School's director. The spring of 2013 will be the conclusion of my third five-year term as director. I want to express my appreciation and respect for our great students and stakeholders. After 15 years as director, I am looking forward to returning to the faculty and the opportunity to teach, focus on my research and writing, and pursue a number of child welfare projects. However, I will deeply miss the joys and leadership roles that I have experienced as the School's director.

Since I came to Michigan State from Hunter College in New York City in 1998, the MSU School of Social Work has grown in many ways. The BASW program has more than doubled in size and added an undergraduate research initiative alongside our signature theme of diversity. From fewer than 200 to more than 500 MSW students, we have opened graduate programs and forged partnerships in Flint, Oakland, and Saginaw; we started the Statewide Blended Program (now adding a Statewide Advanced Standing program); and we have an innovative Weekend program with an emphasis on leadership. Our PhD program has moved from an Interdisciplinary Social Science degree to a doctorate in Social Work with a strong research emphasis. We have developed a number of study abroad programs and international partnerships.

We have created a range of community programs: the Chance at Childhood program, the Kinship Care Education Center, the Foster Care Youth Program (FAME), and Veterinary Social Work. Field Education has created a field liaison model and other innovations while providing hundreds of thousands of service hours to our communities. MSU Social Work has one of the leading Continuing Education programs in the United States—serving thousands of Michigan social workers annually. We have had numerous grant-funded projects and studies that have advanced knowledge and informed an array of faculty presentations and publications.

We have come a long way together.

Most important are our students—your learning, your professional contributions, and your impact in agencies and organizations across Michigan and beyond. I have tried to work diligently on your behalf. Your success—your knowledge, skills, and values—is of primary importance to me and the faculty and staff of the School.

I am deeply grateful to my executive and administrative teams, the School's faculty, program leaders, and staff members, as well as the School's field liaisons, mentors, field instructors, and continuing education presenters. I also want to acknowledge and thank our alumni, our donors, and the School's many friends. Our terrific community partners and College and University leaders have also had crucial roles in our success.

I am hoping that there will be opportunities in my final semester to reflect on our time together and celebrate the School's mission. The search for a new director is well underway, and we look forward to welcoming a new leader in the summer or early fall of 2013. There is much good work to do, a great future for the School and for each student.

Thank you for your support,

Gary R. Anderson, PhD, LMSW
Director, Michigan State University School of Social Work



School of Social Work

College of Social Science

655 Auditorium Road
254 Baker Hall
East Lansing, MI 48824

517-353-8616
Fax: 517-353-3038

Email: socialwork@ssc.msu.edu
Web: <http://socialwork.msu.edu>

MSU is an affirmative-action
equal-opportunity employer.

Special support for the MSU School of Social Work

The growth and success of the School are linked to the financial support you have provided over the past decade as we have seen state support diminish to less than 25 percent of MSU's budget and tuition rise during a time of economic crisis and uncertainty. Through the generous support of alumni, faculty, and friends, a number of specific funds have been established to accomplish a range of purposes to support the MSU School of Social Work students, faculty, and programs. This support—added to ongoing donations from alumni, faculty and friends—has increased our ability to bring national experts to campus to interact with students and faculty, support high quality lectureships and events through Continuing Education, support crucial student scholarships, and provide help for faculty research.

An endowed fund can be established at MSU by anyone for any specific purpose, based on gifts

totaling \$30,000 that can be donated over a five-year period of time. The donations are invested and the interest generated by these funds is used for their intended purposes. These endowments provide special and strong support for the School and often provide a legacy that is designed to honor a special person and inspire students and the School. Currently, there are 25 endowments in the School of Social Work.

Donations to assist the School can be added to existing endowments, used to establish a new endowment, included in the School's general endowment to support students and programs, or placed in a School development fund (non-endowed) to be used to meet additional needs.

The School's general endowment is simply called **The School of Social Work Endowed Fund**. This fund provides a range of supports for the School, including student scholarships, support for faculty research (for example, help with

purchasing equipment, sending out surveys, student assistant employment, and travel), and support for School programs (for example, Michigan Indian Day, diversity trips for students, guest speakers). It also supports the Alumni Scholarship program.

We want to express our deep appreciation to the donors who have established these endowments—these provide special and enduring support for the School. We are also grateful for the development funds that are donated to the School on an ongoing basis and allow us to meet student needs, support faculty work, and advance the programs of the School in crucial ways. As a public university, MSU has not always effectively communicated the importance of private giving; but as state support funds have dwindled, this support from alumni, faculty, and friends has become a valuable foundation for our growth and success.

Thank you! **S**

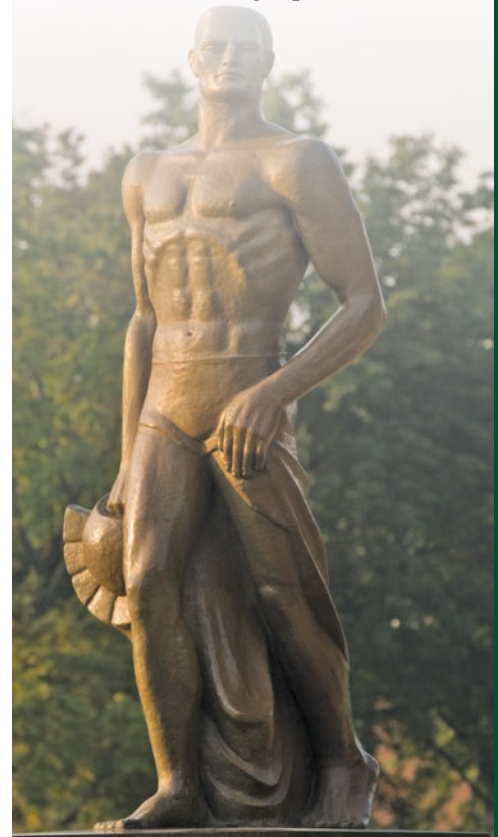
Development funds play a special role

In addition to the endowed funds, there are four development funds (to be described in greater detail in a future newsletter) that provide special help to students. Donations to these funds can be distributed in part or in full, as opposed to an endowment, where funds are invested, and only earnings can be distributed.

- ▶ **School of Social Work Discretionary Fund.** This fund provides a broad range of supports for students, faculty research, and programs.
- ▶ **Mary Lou Jenks Memorial Fund.** This fund provides emergency financial aid to students at risk of having their education endangered by financial emergencies.
- ▶ **Roberta C. Stone Fund.** This is a fund to assist students from all across the state of Michigan who are in the School's Statewide Blended MSW program.
- ▶ **Excelsior Fund: The Allah Rakha Shamoan Scholarship Fund.** This fund is for a high-achieving graduate student.

School's endowed funds offer student enrichment opportunities

- ◀ **Advocacy, Leadership and Social Justice Endowed Fund.** This supports teaching, continuing education, student scholarships, and special programs to advance advocacy, prepare future leaders, and promote social justice.
- ◀ **Gordon and Gladys Aldridge Memorial Endowed Enrichment Fund.** This supports faculty research, teaching, and special projects to advance graduate social work education at MSU.
- ◀ **Gordon and Gladys Aldridge Memorial Endowed Fellowship Fund.** This provides scholarships and stipends to graduate students to support their general educational expenses and to provide special educational opportunities.
- ◀ **Gwen Andrew School of Social Work Faculty Research Fund.** This provides financial support for faculty research projects and faculty-student research initiatives.
- ◀ **Paul P. and Donna K. Freddolino Endowment for Distance Education.** This provides support for students and educational initiatives (such as special lectures) associated with the School's distance education and off-campus programs.
- ◀ **Mruk Endowed Lectureship.** This fund provides support for a major lecture and workshops addressing schizophrenia and the psychosocial aspects of the illness, including implications for family members.
- ◀ **Dorothy Harper Jones Lectureship in Family Therapy.** This fund brings national experts on family therapy as guest lecturers to East Lansing.
- ◀ **Ruth T. Koehler Endowed Lectureship.** This fund supports special lectures and workshops on children's mental health.
- ◀ **Ruth T. Koehler Professorship in Children's Services.** This provides financial support for a clinical faculty position dedicated to child welfare and children's mental health.
- ◀ **Diane Levande Endowed Fund for Work with Older Adults.** This resource is designed to promote social work gerontology education at MSU School of Social Work through student scholarships and program initiatives.
- ◀ **Dr. Mary Bremer Barron Endowed Scholarship Fund.** This fund provides financial support for students from the Flint area, most of whom are returning to school while employed and while raising families.
- ◀ **Joseph and Mary Margaret Dickinson Endowed Scholarship.** This fund will support student scholarships and encourage students to make a positive impact in the world.
- ◀ **Foster Child Endowed Scholarship Fund.** This fund provides financial assistance to youth who have aged out of foster care and are students at Michigan State University and provides financial assistance for programs designed to support these students.
- ◀ **Future Leaders Endowed Scholarship in Social Work.** This scholarship fund is directed toward students who are planning for careers in organizational and community practice and leadership.
- ◀ **Richard D. Gardner Memorial Scholarship Fund.** This fund provides scholarships for nontraditional graduate students in social work and for students with an interest in substance abuse.
- ◀ **Henry-Lane Endowed Scholarship Fund.** This endowment supports graduate students, particularly doctoral students, through scholarships and stipends.
- ◀ **Robert L. Little Scholarship Fund.** This fund provides financial assistance to students interested in a career in child welfare, particularly for those with an interest in kinship care.
- ◀ **Mike Meyer Foster Care Endowed Fund.** This fund provides special support for former foster children to attend college.
- ◀ **Chance at Childhood Endowment.** This supports the School's Chance at Childhood program—a joint program with the College of Law to prepare graduate students in law and social work to be effective advocates for children.
- ◀ **Chance at Childhood Clinic Endowment.** This fund provides additional support to the Chance at Childhood program with a focus on scholarships for social work students and related social work initiatives.
- ◀ **Judith D. Mynsberge Enrichment Fund.** This fund provides resources to support initiatives in relation to the Chance at Childhood program with a particular focus on education and the educational system.
- ◀ **Janet Sisson Tift Scholarship.** This is a fund to support BASW students at MSU.
- ◀ **Veterinary Social Work Endowment Fund.** This fund will support social worker education, social work interns, research, program needs, and compassionate services associated with the Veterinary Social Work program.
- ◀ **McDonnell and Sickle Fund.** This fund will provide scholarships for students, particularly for those who are single parents.

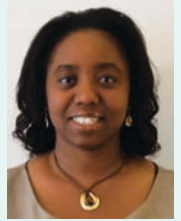


CAC update

The Chance at Childhood program, End Violent Encounters (EVE), Inc., and the Ingham County Friend of the Court are pleased to announce the opening of **Oasis Family Center** for Ingham County families who have or are currently experiencing domestic violence; referrals will be ordered through Ingham County courts. Three years were spent planning and training in preparation for this opening under the stewardship of CAC Program Coordinator **Kimberly Steed-Page**. Funding was also received from the US Department of Justice Office on Violence Against Women.

The Center is currently accepting applications for community volunteers to donate the time and knowledge for parenting time and exchange monitoring, grant writing, marketing, and other areas. The Center is also accepting donations of furniture, toys, office supplies and more. Interested individuals or for more infor-

The Oasis Family Center was established to provide a respectful controlled environment for children and parents to experience safe exchange and supervised parenting time.



Kimberly Steed-Page

mation, please contact Melanie Foley at 517-336-8088 x1138 or by email at oasisfc@oasisfcingham.org.

In further collaboration with the Family Division of the Ingham County Circuit Court, the **CAC Legal Self-Help Center** is based in the Ingham County Court complex.

Currently operating one day per week, the Center is staffed by MSW and JD students from the CAC program. They provide patrons with guidance and assistance and referrals to other service providers for non-legal issues. In the first semester of operation, more than 70 Ingham County residents received assistance. The Center hopes to obtain funding to operate for at least 20 hours per week, to secure a permanent location, and to employ a Center coordinator.

This year, CAC has 12 law and nine social work students enrolled in the program. As in the past, they represent children in a variety of legal proceedings and consult with community members on a wide range of issues in court-appointed cases. Given the past performance of our clinicians, the courts now assign to the clinic more challenging and complex cases. Teams are now also assigned cases in several central and west Michigan counties in which they represent parties in a traditional lawyer-client relationship, such as adoption, guardianship, change of domicile, custody delinquency, and child support matters. **S**

Veterinary Social Work Services

What an amazing experience this past six years has been! The economic situation in our country has seriously affected owners' ability to afford care for their companions and we have seen four other Veterinary Social Work Services close across the country in very well-known colleges of veterinary medicine due to tight university finances.

We are fortunate at MSU, however, because due to many generous donations from clients and others, and the assistance of the School of Social Work and the MSU veterinary hospitals, VSWS has been able to become established and expand. An endowment has been created that will be able to provide a steady, consistent, and permanent source of income.



VSWS hosted its fourth annual Memorial Service on December 2 at the Veterinary Teaching Hospital, as part of the Pet Loss Support Group program. The event is open to anyone in the community.

This is the first year clients of Veterinary Hospice Care attended. Hospice Care is one year old, and only the second in the country associated with a university. This program is designed and run by **Page Yaxley**, DVM, who is also co-facilitator with **Linda Lawrence**, LMSW, of the Pet Loss Support Group. The School's Veterinary Social Work Services program supports the hospice program with visits and calls.

The animal health industry and study of the human-animal bond have come a long way in the past 30 years. **S**



BASW program continues to lead College of Social Science in placement of graduates

The Destination Survey is administered annually by the MSU Career Services Network to all spring and summer bachelor's degree graduates. It attempts to document the post-graduate outcomes of MSU students, offering a snapshot of their progress during the initial transition out of college. The results are reported to President Simon and made public.

For the third year in a row, the School of Social Work leads the College of Social Science with the highest rate of placement of majors in graduate school or jobs (see chart at right).

Congratulations, graduates!

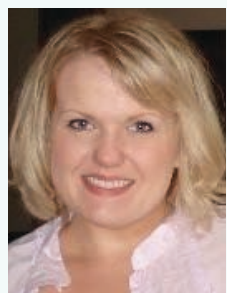


Eaton becomes School's BASW program advisor

Linda Lawrence is stepping down as BASW advisor. We are grateful for her excellent service in this role. Our leading position in the College in graduation and placement rates is, in part, a testament to her dedication. Linda will continue to lead the Veterinary Social Work program, which she has pioneered, and teach courses in the BASW program.



Linda Lawrence



Monaca Eaton

Monaca Eaton will become the new BASW advisor. Monaca has provided exemplary service to our Continuing Education program since its inception over seven years ago. Her dedication to undergraduate students has been demonstrated on multiple occasions, including her role in the undergraduate research initiative. Having an advisor who has first-hand experience with our BASW and MSW programs will be a tremendous asset. We are grateful for her service and leadership in CE and are looking forward to her leadership through the BASW program advising role. **S**

Destination Survey Results

College of Social Science

Description	2009	2010	2011
Number of Graduates	1,227	1,307	1,277
Response Rate	71%	63%	64%
Employed	35%	39%	43%
Continuing Education	36%	42%	36%
Starting Business	n/a	0%	1%
Other Commitments	2%	3%	2%
Unplaced	8%	6%	8%
Unresolved	19%	10%	10%
TOTAL PLACED	73%	84%	82%

School of Social Work

Description	2009	2010	2011
Number of Graduates	33	57	49
Response Rate	74%	67%	78%
Employed	26%	26%	24%
Continuing Education	63%	68%	66%
Starting Business	n/a	0%	0%
Other Commitments	0%	3%	5%
Unplaced	5%	0%	3%
Unresolved	7%	3%	3%
TOTAL PLACED	88%	97%	95%

KEY

Placed: Students employed, admitted to graduate school, completing a certification requirement, starting a business, or pursuing a personal endeavor.

Unplaced: Students actively seeking employment, waiting on admission to a graduate program, or uncertain about plans at survey time.

Unresolved: Students who responded to the first wave of the survey (at graduation time) and were classified as "unplaced" but did not respond to subsequent surveys and no information was acquired through other data collection methods; thus, eventual placement status was never resolved.

MSW program offers options, specialties

Michigan State University School of Social Work's master's degree program was inaugurated shortly after World War II and has been continuously accredited by the Council on Social Work Education (CSWE). The program has produced many distinguished practitioners, educators, researchers, and leaders in human services. The curriculum covers five sequences of study and offers two concentrations, six specialized certificate programs, and an innovative field education program. Students from all over the state of Michigan have an opportunity to earn an MSW degree from MSU at a location close to their home.

Curriculum sequences

- Human Behavior in the Social Environment
- Social Welfare Policy and Services
- Social Work Practice
- Research Methods
- Field Education

Concentrations

The Clinical Social Work concentration (micro-level interventions) prepares students to practice advanced clinical skills in a variety of settings that focus on individuals, families, and groups. The Organization and Community Leadership concentration (macro-level interventions) prepares students to practice a wide range of advanced skills for leadership and change management within diverse organizations and communities.

The first year generalist foundation courses are the same for both Clinical Social Work and Organizational and Community Leadership students. The advanced skills practice courses and advanced field education occur in the second year.

Certificates

- School Social Work
- Clinical Social Work with Families
- Chance at Childhood Program Certificate in Child and Family Advocacy
- Levande Program in Gerontology
- Evidence Based Trauma Treatment
- Addictions Studies

There is also an Interdepartmental Graduate Specialization in Infancy and Early Childhood available.

Field education

The MSU School of Social Work is well known for the quality and breadth of experiences offered through field education. The Field Office maintains a database of over 800 affiliated agencies statewide. Students gain valuable field experience in strengths-based practice with a variety of populations, including children, youth, adults, and the elderly. In working with client systems and others, they provide services in the areas of domestic violence, school violence, child maltreatment, physical and mental illness, physical or mental impairments, poverty, or lack of affordable housing. Students are provided educational opportunities through careful matching and monitoring of their experiences within University-affiliated human service organizations. These organizations reflect the variety of practice settings in which social work services are offered. Each student is supervised by a master's-prepared social worker. It is the goal of the field experience to provide educational opportunities in developing professional identity, self-awareness, and competent practice. **S**

Welcome to new MSW staffers!

José Daniel (Danny) Garcia grew up in a Mexican-American town in south Texas. After earning a bachelor's degree in policy and applied economics at MSU, he applied his passion for social justice and equality as a bilingual family worker. Five years later, he returned to earn his MSW and now is the School's new graduate recruitment and admissions advisor, meeting with prospective MSW students at colleges and universities around the state. Danny's passion to promote higher education developed from the challenges and obstacles he overcame. "It has been a long journey from being a migrant worker to earning my MSW to now working as the recruiter for MSU's MSW program. I am proud of how much I have accomplished, and I am excited to be part of a wonderful team that truly cares for students. It feels great to be in position to give back and help others achieve their dream." **S**



Danny Garcia

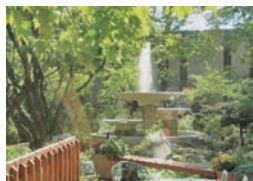


Aubree Rogers

After spending five years as an on-call worker in the School of Social Work, **Aubree Rogers** has joined us full-time as our new graduate office secretary. She is a graduate of Holt High School and studies psychology at Central Michigan University. She enjoys reading, holiday baking, scrapbooking and traveling. She says, "I am excited to be working full-time now with such a great group of people!" **S**

MSW program options

East Lansing Campus – Students on the East Lansing campus can complete the Regular MSW program on a full-time 2-year schedule, or a part-time 3- or 4-year schedule. The Advanced Standing MSW program is also offered in East Lansing, which students can complete on a full-time 10-month schedule or a part-time 2-year schedule. Students can choose between Clinical Practice or Organization and Community Leadership.



Flint Campus – Students on the Flint campus (hosted at Mott Community College) complete the Regular MSW program on a part-time 3-year schedule. All courses required for the Clinical Practice concentration are offered in Flint. Students may choose

the Organization and Community Leadership concentration; they are required to commute to East Lansing for some classes.

Oakland Campus – Students on the Oakland campus (hosted at Oakland University) complete the Advanced Standing program on a full-time 10-month schedule or a part-time 2-year schedule. All courses required for the Clinical Practice concentration are offered in Oakland. Students may choose the Organization and Community Leadership concentration; they are required to commute to East Lansing for some classes.



Saginaw Campus – Students on the Saginaw campus (hosted at Saginaw Valley State University) complete the Advanced Standing program on a full-time 10-month schedule or a part-time 2-year schedule. All courses required for the Clinical Practice concentration are offered in Saginaw. Students may choose the Organization and Community Leadership concentration; they are required to commute

to East Lansing for some classes.

Statewide Blended Program – Students in the Statewide Blended MSW program complete the MSW program through a unique blend of face-to-face instruction, videoconferencing, and online learning, offered in learning communities across the state of Michigan. They may choose either the Regular MSW, a part-time 3-year program, or the Advanced Standing program, a part-time 2-year program. Only the Clinical Practice concentration is offered.



THE JAMES B. HENRY
CENTER FOR
EXECUTIVE
DEVELOPMENT

Weekend Program – Students in the Weekend MSW program complete the MSW program, a part-time 3-year program, through a unique blend of face-to-face weekend sessions and online learning. Weekend sessions are held at the James B. Henry Center in East Lansing. Only the Organization and Community Leadership concentration is offered. **S**

Community Leadership concentration is offered. **S**

The School's PhD program has been enhanced

After piloting a new research practicum for the past two years, a two-course sequence (SW 911/912 Research Practicum) has been developed. It has been shown to enhance students' skills and experience, assisting them in concretizing their own research programs for their dissertation. These sequenced courses take students through an entire research process—from the formation of a research question to the presentation of findings, including the collection of survey data. This practicum takes the place of the previous requirement of an independent research project.

There is also a new course (SW 930) that will include both quantitative and qualitative methods; now students will be able to earn their required research

methods credits from within the School. Finally, a combined history/policy course (SW 905) condenses and synthesizes content from the former history and policy courses.

The PhD Committee is confident that the changes will provide greater consistency in the skills that all students must bring to their dissertation research. The number of required credits remains the same, and students are still expected to have a cognate within another discipline (12–15 credits outside of social work), which retains the multidisciplinary nature of the program, one of its many strengths. The new curriculum will apply to doctoral students beginning Fall 2013. **S**

Introducing the School's newest PhD students



**Eva Palma
Ramírez**

Evangelina Palma Ramírez holds a bachelor's degree in psychology and master's degree in clinical social work from MSU and also has a degree in educational psychology from Mexico. She is co-author of *A Brief History of Cristo Rey Church*, an oral history completed through the Julian Samora Research Institute and Cristo Rey Church. Eva has provided bilingual English and Spanish services for 15 years in projects such as helping Spanish-speaking students in their transition to the US educational system, working with addressing academic and behavioral student problems, and helping empower Spanish-speaking parents through the teaching of basic computer skills. Currently, Eva is working in the area of violence with adolescent women. She is actively involved in organizations that promote the leadership development of Latinas in Michigan. **S**



Ilan Kwon

Ilan Kwon received her bachelor's degree in child psychology and education from Sungkyunkwan University in South Korea and was majoring in human development and family science at Ohio State University. Expanding her research interests into social work areas, she earned her MSW from the University of Michigan, where she had field experience at an Assertive Community Treatment (ACT) team in Michigan community mental health systems. Currently, she is doing research with **Dr. Paul Freddolino** on technology and aging issues and with **Dr. Sheryl Kubiak** regarding mental health court programs. Her current research interests broadly cover community mental health systems, services systems collaboration, social service delivery systems, self help via Internet or mass media, recovery after traumatic events, self growth and development, self realization, mental health, and well-being. **S**



Debora Pond

Debora Pond received her bachelor's degree in sociology and social work from Eastern Michigan University. Her MSW with a concentration in mental illness and chemical dependency was also awarded from EMU. She has experience working with individuals experiencing severe and persistent mental illness, homelessness, and substance abuse. Debora is also currently pursuing a master's degree in public health at MSU. During her doctoral studies, she plans to focus on health disparities among LGBTQ, homeless, and Native American people. Debora has been awarded an MSU University Enrichment Fellowship, guaranteeing a full five years of funding to outstanding doctoral students. UEF recipients are recognized for their academic achievement, research goals, contribution to a diverse educational community, and a record of overcoming obstacles. **S**

Fall 2012 special School-sponsored CE programs

Thanks to generous donors, the School has established several endowments to support practice-focused education and training. In addition, our Alumni Association has been active in providing a series of breakfast programs each year, and we have a variety of strong partnerships that help us expand our offerings to broader audiences.

Endowment-supported programs		
	<p>Fund for Advocacy, Leadership, and Social Justice</p> <ul style="list-style-type: none"> ■ The Crisis in Mental and Physical Health in African-American Communities – Alvin Poussaint, MD ■ The Hunger Games: Social Work Ethics and Social Justice – Gary Anderson, PhD, LMSW ■ Transformative Leadership in a Time of Crisis in the Human Services – Willie F. Tolliver, DSW, and Steve Burghardt, PhD, MSW ■ Developing Leadership Skills through Constructive Performance Feedback – Elaine K. Yakura, JD, PhD ■ I’m Engaged! Volunteer Management: Retention and Engagement – Brenda L. Roberts, MA 	
	<p>Levande Program in Gerontology</p> <ul style="list-style-type: none"> ◀ From the Trenches: Social Work Practice in the Dementias – Karen Bugg, RN, LMSW ◀ Hoarding Disorder: Treatment Across the Lifespan – Laura Lokers, LMSW ◀ Psychopharmacology – Brian Berryhill, PharmD 	
School-supported programs		
	<p>MSU Social Work Alumni Board Breakfasts</p> <ul style="list-style-type: none"> ▲ Where and When to Draw the Line: Boundaries and Ethical Social Work Practice – Cheryl Williams-Hecksel, LMSW ▲ Pain Management – Nan Hunt, LMSW, CMAC 	
Partnerships		
	<p>Free training for Adoptive, Foster, and Kinship Families</p> <ul style="list-style-type: none"> ▲ Toward Successful Adoption: Your Child, Your Family, Your Community ▲ Cross Cultural Adoption: Beyond Race ▲ Helping Children Make Successful Transitions in Adoption 	 <p>Supervision in Child and Family Services Certificate courses</p>
	<p>Leadership Academy for Supervisors - Supervision in Child and Family Services</p>	 <p>Capital Area Health Alliance - Community Symposium: End-of-Life Decision Making</p>
	<p>Impact Systems of Care 5th annual conference - Michigan: Building and Supporting Systems that Care</p>	 <p>Michigan Indian Day</p>
		<p>Child Welfare In-Service Training programs</p>
<p>MICHIGAN STATE UNIVERSITY College of Nursing</p>		<p>Game Changers: The Impact of Health Care Policy on Case Managers' Roles</p>

CONTINUING EDUCATION

Spring 2013

Register early and save money! You may register by fax, online, or by mail. Visit www.socialwork.msu.edu/ceu.

Adoption & Foster Care		Healthcare	
March 1*	Successful Strategies for Working with LGBTQ Youth in Foster Care	February 15	Pain Assessment
March 22*	Understanding Autism for Children in Foster Care	March 21	Seeing Your Way through Pain: Guided Imagery as a Pain/Anxiety Management Strategy
April 4*	Toward Successful Adoption: Training for Foster Care & Adoption Workers	April 5	Difficult End-of-Life Planning & Conversations with Chronically Ill Older Adults
Advocacy		April 5	Advance Directives: The What, the How & the Legal Requirements
February 22*	Special Education Advocacy	Leadership & Social Justice	
March 7	Dance of Partnership: Why Do My Feet Hurt? Strengthening the Partnership between Professionals & Parents Who Have Children with Disabilities	February 23	Creating Synergy & Strategy in the Workplace
Aging		March 23	The Sweetspot of Collaboration
February 23	Optimal Aging: A Strength-Based Approach to Understanding & Working with Older Adults	April 20	Culturally Competent Leadership
March 23	Aging & Addiction	April 26	Resiliency & Leadership: Directing a State's Child Welfare System in a Time of Crisis
April 20	Health Care Reform: Impact on Older Adults	Mental Health	
Children & Families		March 22	Life Goals Collaborative Care for People with Mental Illness
February 8-9	Trauma Focused Cognitive Behavioral Therapy	April 18	Working toward Recovery for People with Schizophrenia: The Role of Positive Psychology
February 22*	Effects of Sexual Abuse on Children & Adolescents: Assessment & Treatment	Supervision in Child & Family Services Certificate	
March 1*	Using Solution Focused Techniques to Enhance Communication & Understanding	February 15	Supervision Certificate #5: Working with Differences
March 1	Parent-Child Interaction Therapy: Evidence-Based Treatment for Young Children with Conduct Problems	March 15	Supervision Certificate #1: The Role of Leaders in Staff Retention
March 7	Change the Lens, Change the Life	Master's Level Social Work Licensure Exam Preparation Course	
March 13	Emerging & Evidence-Based Practice in Early Childhood Mental Health	May 10-11 in East Lansing • May 31-June 1 in Grand Rapids June 7-8 in Livonia	
March 14*	Motivational Interviewing with At-Risk Youth & Families & Substance Abuse	One-Hour Online Clinical & Macro Programs	
March 14*	Cultivating Resiliency: Anxiety & Stress Management with Trauma Implications	<ul style="list-style-type: none"> ▶ Adolescent Self Harm & Suicide Ideation ▶ Aging, Sexuality & Sexual Health: What Social Workers Need to Know ▶ Depression in the Elderly ▶ Grief & Loss ▶ Reflective Supervision ▶ Sex Therapy 101 ▶ Substance Abuse: Motivational Strategies & the Stages of Change ▶ Supporting People Affected by Pain through Pain Management Advocacy ▶ Understanding the Psychopharmacology of ADHD for Mental Health Professionals 	
March 15	Play Therapy Theory, Technique & Transition	School Social Work Competency Series	
March 22*	Applying Cultural Competence to Caseworker Visits	<ul style="list-style-type: none"> ▶ School Social Work Intervention: Children with Special Needs ▶ School Social Workers—Continuing Professional Development Seminar (Refresher Course) 	
April 25*	Supporting Children with Special Needs Following Grief & Trauma	Summer 2013...	
Clinical Practice		Clinical Practice <ul style="list-style-type: none"> ▶ Substance Abuse 101 ▶ An Introduction to Dialectical Behavior Therapy ▶ Health Centered Social Work Practice 	
February 21	Eating Disorders & Co-Occurring Disorders – Yoga-Based Therapy	Leadership Seminar Series <ul style="list-style-type: none"> ▶ Transformative Leadership 	
February 22	Ethical Dilemmas & Decision Making in Social Work	Aging Series <ul style="list-style-type: none"> ▶ Creative Interventions with Older Adults ▶ Grief & Loss Across the Lifespan 	
March 11	Understanding Shame & Building Shame Resilience	Child Welfare <ul style="list-style-type: none"> ▶ Using Protective Factors to Strengthen Families ▶ Igniting Greatness: Successful Interventions with Challenging Children 	
March 12	An Integrated Theoretical Model for Affair Recovery	Child & Family Practice <ul style="list-style-type: none"> ▶ Creating a Playroom 	
March 13	Expressive Therapy Interventions to Promote Clinician Self Care	Great Lakes Summer Institute <ul style="list-style-type: none"> ▶ Rural Social Work Practice ▶ Dialectical Behavior Therapy Skills Building ▶ An Introduction to Internal Family Systems 	
March 21	Addressing Boundaries, Ethics & Personal Values in Social Work Practice		

*These courses are approved as Child Welfare In-Service Trainings and are FREE for DHS child welfare and private agencies holding a contract with DHS for foster care, adoption, and residential services. For these courses, register online only at: <https://socialwork.msu.edu/ceu/catalog.php>

FIND DETAILS AND REGISTER AT WWW.SOCIALWORK.MSU.EDU/CEU ♦ PH. (517) 353-3060

Michigan Indian Day 2012



Virginia Drywater-Whitekiller, EdD, MSW, and Cherokee, keynote speaker.

Michigan Indian Day 2012 featured a presentation by Virginia Drywater-Whitekiller, EdD, MSW, who is currently the chair of professional studies (social work and criminal justice programs) and associate professor of social work at Northeastern State University College of Social and Behavioral Sciences in Tahlequah, OK. Dr. Drywater-Whitekiller spoke on *Cultural Resilience: A Strengths Perspective*.

Cultural resilience is a traditional phenomenon utilized by American Indians for centuries as a means to survive and is a concept that speaks to a strengths perspective that is common in social work and other helping professions. The foundation of cultural resilience is that all minority populations have cultural assets that assist them in overcoming the obstacles that can encompass living and functioning in majority society.

Later that day, Dr. Drywater-Whitekiller was honored at a community feast sponsored by the School of Social Work and MSU's American Indian Studies program. Thanks go to **Dr. Suzanne Cross** for her leadership in organizing this event. **S**



Le Anne Silvey, PhD, LMSW, ACSW, and Waganakising Odawa, Little Traverse Bay Bands of Odawa Indians, is director of MSU's American Indian Studies program; she introduced Dr. Drywater-Whitekiller.

Ingham County Commissioner **Debbie DeLeon** presented Director **Gary Anderson** with a resolution in support of Michigan Indian Day. **Dr. Angelique Day** (MSW 2005) is seen in the background.



Dr. Cross retires, leaving lasting legacy



Suzanne Cross

Dr. **Suzanne Cross** retires from MSU and the School of Social Work at the end of December 2012. While we are pleased that she will be able to dedicate her time and talents to a range of pursuits, we will miss her leadership, work with students, teaching, and many other contributions to the School. She leaves a lasting legacy at MSU and the School of Social Work.

Dr. Cross received her bachelor's degree from Michigan State University, her MSW from the University of Michigan, and her PhD from MSU's College of Education. Dr. Cross has combined expertise in social work practice, gerontology, American Indian communities, and higher education. After a number of years on the faculty at Arizona State University, she returned to Michigan and to the faculty at Central Michigan University, where she also served as program director for sociology, anthropology, and

social work. In 2001, she joined the faculty at Michigan State University School of Social Work. At MSU, she has mentored many students—publishing and presenting with a number of these students. She has taught many courses at MSU, including social work practice, interviewing, gerontology, introduction to social work, and work with American Indian communities.

As a member of the Saginaw Chippewa Nation, Dr. Cross coordinated and supported activities to increase student knowledge about American Indian communities. The School's Michigan Indian Day is a legacy to her educational and outreach leadership. Through her research, presentations, and writing on boarding schools, working with American Indian students, social work education, kinship care and elders, mentoring, and pain management, she has advanced knowledge at MSU, the state of Michigan, and the nation.

There are many more accomplishments. We wish Dr. Cross continued success and hope that she will continue to stay connected to MSU and the School of Social Work. **S**

Poussaint addresses suicide in black communities

Alvin Poussaint, one of the foremost national experts on stress, interpersonal communication, race and multiculturalism, and child and family dynamics, spoke on *The Crisis in Mental and Physical Health in African-American Communities* at Michigan State University in November.

“As you might expect from someone of Dr. Poussaint’s caliber, his talk was thought-provoking and rooted in excellent research from a man who has repeatedly shed light on important topics in the African-American community like no one else can,” said **Dr. Gary Anderson**, director of the School of Social Work. “This was an excellent opportunity for students, faculty, and community members to gain important perspectives from a very knowledgeable source, one of America’s leading consultants, researchers, and writers on the African American experience.”

“How many slaves suffered,” Poussaint asked, “from post-traumatic stress disorder as we understand it today?” After being plucked from their homeland, suffering through a torturous journey by boat to a foreign land, sold into slavery and treated as less than human the entire time, the percentage of PTSD sufferers among slaves would be extremely high, he said. Such experiences have a way of negatively affecting generation after generation, he added. The problem today, however, is that suicide among blacks is not studied enough because people assume it does not happen frequently, but suicide is a very real problem in black America.

Poussaint is professor of psychiatry and faculty dean for student affairs at Harvard Medical School where he has worked since 1969. He also serves as that school’s director of the Office of Recruitment and Multicultural



Alvin Poussaint

Affairs. A recipient of numerous awards and honorary degrees, Poussaint is a Distinguished Life Fellow of the American Psychiatric Association, a Life Member of the American Academy of Child and Adolescent Psychiatry, and a Fellow of the American Association for the Advancement of Science.

His lecture was made possible through support from the MSU School of Social Work’s Fund for Advocacy, Leadership, and Social Justice, and also the MSU Department of Psychiatry and Colleges of Human Medicine, Osteopathic Medicine, and Social Science; admission was free. **S**

Online elective courses list grows for summer 2013

After last summer’s successful launch of fully online elective courses open to all MSU undergraduates, the list of offerings has been expanded for Summer 2013. The *Surviving the Coming Zombie Apocalypse* course, using a metaphor widespread

in popular culture and mainstream academic pursuits as well as used by the US Centers on Disease Control and Prevention in their emergency preparedness program, was part of a University pilot study in social marketing and received world-wide attention.

At press time, courses included:

- ▶ Child Welfare – **Leisa Fuller**, LMSW
- ▶ Fairy Tales, Fables, & Fantasy: Clues to a Child’s Psyche – **Victoria Fitton**, PhD, LMSW, RPT
- ▶ Families & Stress – **Tina Timm**, PhD, LMSW, LMFT
- ▶ Food & Culture: Understanding Culture, Society & Self through Food – **Kimberly Steed-Page**, LMSW
- ▶ i-Parenting – **Nola Carew**, LMSW
- ▶ Introduction to Social Work – **Lynn Nee**, MSW
- ▶ Poverty & the American Family: A Multimedia Exploration – **Natalie Kasiborski**, ABD, MSW
- ▶ School Violence: Causes & Interventions – **Glenn Stutzky**, LMSW
- ▶ Substance Abuse & the Human Services – **Al Platt**, JD, LMSW, CAADC, & **Karen Newman**, LMSW, CAAC
- ▶ Surviving the Coming Zombie Apocalypse: Catastrophes, Disasters & Human Behavior – **Glenn Stutzky**, LMSW (this course will be open to graduate students in 2013)
- ▶ Trauma across the Lifespan – **Nola Carew**, LMSW

Students get look inside Jackson Prison

On September 7, four MSU Master of Social Work students, **Brad Ayers, Nicole Monta, Mario Wilcox, and Thelmo Torrealba**, visited the Michigan Department of Corrections Residential Substance Abuse Treatment (RSAT) program at the Jackson Cooper Street prison in Jackson, MI. The trip was arranged by **Dr. Anthony King**, a member of the Michigan Parole Board and a member of the MSU School of Social Work faculty.

The prison visit grew out of the students' participation last summer in SW822: Topics in Policy and Advocacy. The course focused on the juvenile justice system and how social workers can advocate for public policies that address the needs of troubled youth and their families. Throughout the course, Dr. King, an expert on community corrections and social work practice in correctional settings, emphasized the important role social workers play in both the juvenile and adult correctional systems. As an advocate for social justice in correctional settings, Dr. King encouraged students to consider a career working with prisoners in one of Michigan's 21 correctional facilities.

During the four-week summer course several students privately expressed an interest in visiting a prison. Several students worked in adolescent youth facilities and were hoping to see how adult institutions operate.

In addition, Dr. King invited **Thomas Combs**, chair of the Michigan Parole Board and former administrator of the Department of Corrections' substance abuse programs, to speak to students about social work practice in prisons. Besides answering students' general questions of about prisons and inmates, Mr. Combs highlighted the challenges and rewards of working with inmates and encouraged Dr. King and the class to visit the Residential Substance Abuse Treatment (RSAT) program at Jackson Cooper Street prison.

During their visit, King and the students met and spoke with the director of RSAT, Anne Benion, a master's level social worker, RSAT Assistant Residential Unit Manager Kevin Morgel, and several corrections officers responsible for supervising inmates in the RSAT unit. They also toured the RSAT unit, as well as the prison yard where they observed inmates participating in a

variety of unorganized activities or just walking and talking.

Altogether the visit lasted about two hours, and the students were appreciative of the opportunity to visit the prison and the RSAT program. In an email to Professor King one student expressed her reaction to the trip in the following manner:

Just a quick note of thanks for arranging the tour of the Jackson facility this morning. It was a very interesting experience, and I am sure the rest of the group got a lot out of it. Such a unique place. It would be a shame to miss out on career opportunities because we judge the setting by preconceived notions. And episodes of Law & Order.



Anthony King

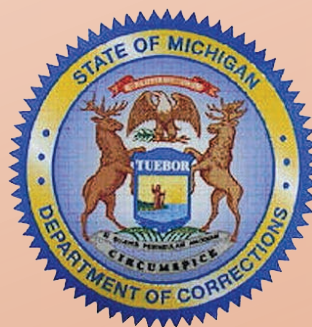
The RSAT program is an intensive six-month substance abuse treatment program that serves inmates with chronic substance abuse problems. Inmates must have a Substance Abuse Subtle Screening Inventory (SASSI) score of three or four to qualify for the program. Inmates that meet this criterion have a serious substance abuse problem and, therefore, are in need of intensive treatment. The RSAT program uses a therapeutic community model and other evidence-based principles and interventions to help inmates understand the underlying factors that contribute to their substance abusing behavior. The program is staffed by master's- and bachelor's-level social workers.

Participation in RSAT is voluntary, but many inmates are referred to the program by parole board members. At least two-thirds of Michigan's 44,000 inmates have serious substance abuse problems, and the link between substance abuse and risk for engaging in criminal behavior has long been established. Hence, the RSAT program plays an important role in reducing prison inmates' risk to re-offend.

The Jackson Cooper Street prison is a Level I security facility that houses approximately 1,700 inmates. It houses inmates that have demonstrated during their incarceration that they generally follow prison rules and regulations and are capable of handling a higher degree of autonomy than the average inmate. Nevertheless, JCS is still a prison and all visitors must be thoroughly vetted before they can enter the facility. In addition, a visit by outsiders must be scheduled around a host of other important activities that take place at a prison. **S**



Thomas Combs



School featured in national newsmagazine

Work done by MSU School of Social Work faculty was cited in the cover story for the November/December 2012 issue of *Social Work Today*. The cover feature—*Tech-Savvy Older Adults: Staying Connected, Challenging Stereotypes*—looked at how older adults are using technology to stay involved socially, with family, and with caregiving resources.



Paul Freddolino



Tina Blaschke-Thompson



Amanda Woodward

Written by Christina Reardon, LSW, who is based in Harrisburg, PA, and associated with Temple University, the article describes how an increasing number of elders are using the Internet, Facebook, Skype, and other tools to connect with friends, family members, and caregivers. Social workers who ignore the role of technology in older adults' relationships risk missing an important piece of the puzzle in helping these adults maintain and improve physical, mental, and emotional well-being.

Paul Freddolino, professor and associate director for research and distance education, was quoted, "Most of the time, social workers are not asking older adults—or any of their clients—about their

social connections made online or through technology. If we limit our understanding, we're missing a dimension that's important."

The article goes on to say that use of the Internet or e-mail and social networking are increasing among older adults; eleven percent of adults aged 65 and older own a smart phone. Older adults see technology as a tool for connection, entertainment, support, and information, even though many are acquiring technology skills for the first time. Many companies are looking to make current technology modalities "elder friendly."

The article went on to talk about how Freddolino is providing research support to Connected

Living, a Massachusetts-based company using a web-based social networking and distance-learning platform for technology engagement among older adults.

The article continues with reference to the literature review by Blaschke, Freddolino, and Mullen (2009) looking at implications for the increasing use of technology tools among older adults, and cites a study that examined the effectiveness of a training program for older adults in Otsego County (Woodward, Freddolino, Wishart, et al., 2012). Others who have worked on the projects include Louanne Bakk (PhD 2012), Rie Kobayashi (PhD 2009), Caitlin Tupper (MSW 2011), and Erin Mullen (MSW 2008). **S**

MSU social workers in government, politics, and leadership

Teresa Abed, a school social worker, won the Michigan 71st House District race, marking the first time since 1964 a Democrat has been elected to represent the district in the state House. Abed has been active with the field program for the MSU School of Social Work; her daughter is an MSU BASW graduate.

Rosalynn Bliss (MSW 2000) is in the middle of her second term on the Grand Rapids City Commission; she will be up for re-election in 2013. She has recently been named one of the 50 Most Influential Women in West Michigan by the *Grand Rapids Business Journal* for her work as director of residential services at D.A. Blodgett-St. John's.

Terry Brown (MSW 1983), was elected to the Michigan House of Representatives representing the 84th district. After having served in that office from 2007–2010, he was returned to his seat in 2012 by a more than 5,000-vote margin.

Paula Clark (BASW 1969) has been re-elected as Bath (Michigan) Charter Township Supervisor. Clark also served as president of the MSU School of Social Work Alumni Association Board.

Debbie Stabenow (MSW 1975) was re-elected to the US Senate in 2012 for her third term by a substantial majority. She currently serves as the chair of the Senate Agriculture Committee. **S**



Debbie Stabenow

Sampling of recent tenure-system faculty activities

Book chapters

D.L. Agbényiga, 2011. Defining Childhood: A Historical Development Perspective. In: R. Ame, D.L. Agbényiga & N.A. Apt. (eds.) Children's Rights in Ghana: Rhetoric or Reality? (pp. 15-36). Lexington Books, Division of Littlefield Publishers, Inc., Lanham, MD.

N.A. Apt, **D.L. Agbényiga** & R. Ame, 2011. Introduction: Confronting the Challenges Optimizing Child Rights in Ghana. In: R. Ame, D.L. Agbényiga & N.A. Apt. (eds.) Children's Rights in Ghana: Rhetoric or Reality? (pp. 3-13). Lexington Books, Division of Littlefield Publishers, Inc., Lanham, MD.

R. Ame, N.A. Apt & **D.L. Agbényiga**, 2011. Conclusion: The Future of Children's Rights in Ghana. In: R. Ame, D.L. Agbényiga & N.A. Apt. (eds.) Children's Rights in Ghana: Rhetoric or Reality? (pp. 15-36). Lexington Books, Division of Littlefield Publishers, Inc., Lanham, MD.

H. Cho, 2011. From Hawaii to New York: A Historical Understanding of Korean Americans' Immigration and Resistance Against All Odds. In: J.H. Schiele (ed.) Social Welfare Policy: Regulation and Resistance Among People of Color (pp. 113-133). Sage: Thousand Oaks, CA.

S.L. Cross, A. Day & P. Farrall. 2011. American Indian/Alaskan Native Grand Families: The Impact on Child Development. In: P. Spicer, P. Farrell, M. Sarche & H.E. Fitzgerald (eds.) Child Psychology and Mental Health: Cultural and Ethno-Racial Perspectives: Vol. 1: American Indian Children and Mental Health: Development and Context. ABC CLIO, Inc., Santa Barbara, CA. ISBN 978-0-313-38304-5.

Books

R. Ame, **D.L. Agbényiga** & N.A. Apt. (eds.) 2011. Children's Rights in Ghana: Rhetoric or Reality? Lexington Books, Division of Littlefield Publishers, Inc., Lanham, MD.

R. Martinez, E. Palma & **P. Horner**. 2011. History of Cristo Rey Church. (December 2011).



DeBrenna Agbényiga



Pilar Horner

J. Seita. (In print). Trauma in Foster Care. In Trauma Informed Practices for Children and Adolescents (TIPS). Brunner Rutledge Publishing Company, New York.

Peer-reviewed journal articles published

D.L. Agbényiga. 2011. Organizational Culture Influence on Service Delivery: A Mixed Methods Design in a Child Welfare Setting. Children and Youth Services Review 33(10), 1767-1778.

D.L. Agbényiga & L. Huang. 2011. Impact of Organizational Network on the Roles of NGO in Elder-care: Perspectives from Help Age Ghana Day Care Centres. Ageing International 36(3).

D.L. Agbényiga. 2011. Organizational Culture-Performance Link in the Human Services Setting. Administration in Social Work 35(4).

H. Cho & H. Chang. 2011. Criminal Justice and Batterer Intervention Programs: Policies and practices in Korea and the United States. Corrections Forum 5(1), 217-228 (in Korean).

J.S. Hong, **H. Cho**, P. Allen-Meares & D. Espelage. 2011. The Social Ecology of the Columbine High School Shootings. Children & Youth Services Review 33, 861-868.

J. Riebschleger & **S. Cross**. 2011. Loss and Grief Experiences of Mentors in Social Work Education. Mentoring & Tutoring 19(1), 65-82.

Woodward, A.T., P.P. Fredolino, C.M. Blaschke-Thompson, D.J. Wishart, L. Bakk, R. Kobayashi & C. Tupper. 2011. Technology and Aging Project: Training Outcomes and Efficacy from a Randomized Field Trial. Ageing International

36(1), 46-65. DOI: 10.1007/s12126-010-9074-z.

R. Hall. 2012. Islamic Spirituality vis-à-vis Asia Pacific Muslim Populations: A Resource for Western Social Work Practice. International Social Work 55(1), 109-124.

R. Hall & A. Breland-Noble. 2011. Spirituality vis-à-vis Islam as Prerequisite to Arab American Well Being: The Implications of Eurocentrism for Mainstream Psychology. Am. J. of Psychotherapy 65(2), 151-162.

R. Hall. 2011. A Psychogenesis of Color-Based Racism: The Implications of colonialism for People of Color. Psychology 2(3), 219-224.

R. Hall. 2011. Spirituality vis-à-vis Muslim Filipino Families: Implications for Social Work Intervention. J. of Social Work.

R. Hall, J. Livingston, C. Brown & J. Mohabir. 2011. Islam and Asia Pacific Muslims: The Implications of Spirituality for Social Work Practice. J. of Social Work Practice: Practice Psychotherapeutic Approaches in Health, Welfare and the Community 25(2), 205-215.

R. Hall. 2011. Eurocentrism and the Postcolonial Implications of Skin Color Among Latinos. Hispanic J. of Behavioral Sciences 33(1), 105-117.

R. Hall & J. Pizarro. 2011. Cool Pose: Black Male Homicide and the Social Implications of Manhood. J. of Social Service Research 37(1), 86-98.

P. Horner, A. Grogan-Kaylor, J. Delva, D.B. Bares, M. Castillo. 2011. The Association of Family and Peer Factors with Tobacco, Alcohol, and Marijuana Use Among Chilean Adolescents in Neighborhood Context. Substance Abuse and Rehabilitation. Vol. 2011:2(1). 163-172.

A.K. Hughes. 2011. HIV Knowledge and Attitudes Among Providers in Aging: A National Survey. AIDS Patient Care and STDs 25, 539-545.

A.K. Hughes, R.D. Harold & J. Boyer. 2011. Awareness of LGBT Aging Issues Among Aging Services Network Providers. J. of Gerontological Social Work 54, 659-677.

S. Klein. 2011. The Availability of Neighborhood Early Care and Education Resources and the Maltreatment of Young Children. Child Maltreatment 16(4), 299-310.

S. Klein & B.J. Harden. 2011. Building the Evidence-based Regarding Infants/Toddlers in the Child Welfare System. Children and Youth Services Review 33(8), 1333-1336.

B.J. Harden & **S. Klein**. 2011. Infants/Toddlers in Child Welfare: What Have We Learned and Where Do We Go From Here? Children and Youth Services Review 33(8), 1464-1468.

B.K. Ahmedani, **S.P. Kubiak**, C.F. Rios-Bedoya, M. Mickus & J.C. Anthony. 2011. Willingness to Treat Drug Dependence and Depression: comparison of Future Health Profes-

sionals. Substance Abuse and Rehabilitation 2, 43-51, DOI 10.2147/SAR.S14747.

S.P. Kubiak, A. Zeoli, L. Essenmacher & J. Hanna. 2011. Longitudinal Analysis of Transitions between Jail and community Based Treatment for Individuals with Co-occurring Disorders. Psychiatric Services 62, 679.

S.P. Kubiak, L. Essenmacher, J. Hanna & A. Zeoli. 2011. Co-occurring Serious Mental Illness and Substance Use Disorders within a County-wide System: Who Interfaces with the Jail and Who Does Not? J. of Offender Rehabilitation 50, 1-17.

S.P. Kubiak & T. Allen. 2011. Public Opinion Regarding Juvenile Life without Parole. Comparison of 2005 and 2006 Surveys. Crime and Delinquency 57, 495-515.

K. Lee. 2011. Impacts of the Duration of Head Start Enrollment on Children's Academic Outcomes: Moderation Effects of Family Risk Factors and Earlier Outcomes. J. of Community Psychology 39(6), 1-19.

T.M. Timm, **J.K. Mooradian** & R.M. Hock. 2011. Exploring Core Issues of Adoption: Individual and Marital Experience of Adoptive Mothers. Adoption Quarterly 14(4), 268-283. DOI: 10.1080/10926755.2011.628264.

J.K. Mooradian, R.M. Hock, R. Jackson & **T.M. Timm**. 2011. What Couples Who Adopt Children from Child Welfare Want Professionals to Know About Supporting Their Marriages. Families in Society: The Journal of Contemporary Social Services 92(4), 390-396. DOI: 10-1606/1044-3894.4155.

J.K. Mooradian, C. Knaggs, R.M. Hock & D. LaCharite. 2011. Opening Options: Making Field Education Work in a Private Practice Setting. J. of Teaching in Social Work 31, 341-349.

J.K. Mooradian, **T.M. Timm**, R.M. Hock & R. Jackson. 2011. "It's About Us": Martial Adjustment and Marital Adaptation of Couples Who Adopt Children from the Child Welfare System. J. of Family Social Work 14, 262-280. DOI: 10.1080/10522148.2011.571644.

J. Riebschleger, & **D.L. Agbényiga**. December 2011. An Early Planning Model for Increasing International Content in Social Work Education. J. of Baccalaureate Social Work 17(1), 15-36. (available online).

A. Day & **J. Riebschleger**. December 2011. Maximizing Educational Opportunities for Youth Aging Out of Foster Care by Engaging Youth Voices in a Partnership for Social Change. Children and Youth Services Review (available online).

J. Riebschleger & B. L. Anderson. 2011. The Learning Impacts of a Social Work Student's International Education Experience. Reflections 17, 53-62.

Continued on next page

- R. Hock, **T.M. Timm** & J. L. Ramisch. (In press, available online). Parenting children with Autism Spectrum disorders: A Crucible for Couple Relationships. *Child and Family Social Work*. DOI: 10.1111/j.1365-2011.00794.
- T.M. Timm**, S.J. Reed, R.L. Miller & M.T. Valenti. (In press, available online). Sexual Debut of Young Black Women Who Have Sex with Women: Implications for STI/HIV Risk. *Youth & Society*. DOI:10.1177/0044118X11409445.
- T.M. Timm**, J. Birkenmaier & S. Tebb. 2011. The Experiential Community Assessment Project: Integrating Social Work Practice Skills. *J. of Community Practice* 19(2), 175-188. DOI: 10.1080/10705422.2011.569649.
- S.J. Reed, R.L. Miller & **T.M. Timm**. 2011. Identity and Agency: The Meaning and Value of Pregnancy for Young Black Lesbians. *Psychology of Women Quarterly* 35(4), 571-581. DOI: 10.1177/0361684311417401.
- T.M. Timm** & M. Keiley. 2011. The Effects of Differentiation of Self, Adult Attachment, and Sexual Communication on Sexual and Marital Satisfaction: A Path Analysis. *The J. of Sex and Marital Therapy* 37(3), 206-233. DOI: 10.1080/0092623X.2011.564513.
- S.J. Ree, R.L. Miller, M.T. Valenti & **T.M. Timm**. 2011. Good Gay Females and Babies' Daddies: Black Lesbian Community Norms and the Acceptability of Pregnancy. *Culture, Health & Sexuality: An International Journal for Research, Intervention and Care* 13(7), 751-765. DOI: 10.1080/13691058.2011.571291.
- M. Aranda, D. Chae, K.D. Lincoln, R.J. Taylor, **A.T. Woodward** & L.M. Chatters. 2011. Demographic Correlates of DSM-IV Major Depressive Disorder Among Older African Americans, Black Caribbean, and non-Hispanic Whites: Results from the Naitnal Survey of American Life. *International J. of Geriatric Psychiatry*. DOI: 10.1002/gps.2805.
- A.T. Woodward**, R.J. Taylor, K.M. Bullard, M.P. Aranda, K.D. Lincoln & L.M. Chatters. 2011. Prevalence of Lifetime DSM-IV Affective Disorders Among Older African Americans, Black Caribbean, Latinos, Asians, and Non-Hispanic Whites. *International J. of Geriatric Psychiatry*. 10.1002/gps.2790.
- R.J. Taylor, **A.T. Woodward**, L.M. Chatters, J.S. Mattis & J.S. Jackson. 2011. Seeking Help from Clergy Among Black Caribbean in the United States. *J. of Race and Social Problems* 3(4), 241-251. DOI: 10.1007/s12552-011-9056-0.
- A.T. Woodward**. The Role of Discrimination in the Use of Professional Services and Informal Support for a Mental Disorder. 2011. *J. of Race and Social Problems* 3(3), 146-159. DOI: 10.1007/s12552-011-9049-z.
- A.T. Woodward**, R.J. Taylor & L.M. Chatters. 2011. Use of Professional and Informal Support by Black Men with Mental Disorders. *Research in Social Work Practice* 21(3), 328-336. DOI: 10.1177/1049731510388668.
- L.M. Chatters, J.S. Mattis, **A.T. Woodward**, R.J. Taylor, H.W. Neighbors & N.A. Grayman. 2011. Use of Ministers for a Serious Personal Problem Among African Americans: Findings from the National Survey of American Life. *Am.J. of Orthopsychiatry* 81(1), 118-127. DOI: 10.1111/j.1939-0025.2010.01079.x.
- ### Peer-reviewed journal articles in press
- D.L. Agbényiga**, S. Barrie, V. Djelaj & S. Nawyn. (In press). Expanding Our Community: Independence and Interdependent Factors Impacting Refugees' Successful Community Resettlement. *Advances in Social Work*.
- D.L. Agbényiga** & L. Huang. (In press). Gendered Immigration: Implications and Impact on Social Work Education. *Advances in Social Work*.
- S. Nawyn, L. Gjakaj, B. Grace & **D.L. Agbényiga**. (In press). Linguistic Isolation, Social Capital, and Immigrant Belonging. *J. of Contemporary Ethnography*.
- H. Cho** (In press). Examining Gender Differences in the Nature and Context of Intimate Partner Violence. *J. of Interpersonal Violence*.
- H. Cho**. 2011. Intimate Partner Violence Among Asian Americans: Risk Factor Differences Across Ethnic Subgroups. *J. of Family Violence*.
- R. Hall**. (In press). Islamic Spirituality vis-à-vis Asia Pacific Muslim Populations: A Resource for Western Social Work Practice. *International Social Work*.
- R. Hall**. (In press). Eurocentrism vis-à-vis Social Work Education: Intellectual Narcissism as Trivialization of Skin Color. *J. of Unabridged Genius*.
- R. Hall**. (In press). Evidence-Based Practice vis-à-vis Feminization of Social Welfare: Implications for Domestic Violence. *J. of Sociology and Social Welfare*.
- R.L. Mercier, **R.D. Harold**, M. Dimond & S. Berlin. (In press). Lesbian Health Care: Women's Experiences and the Role for Social Work. *J. of Social Service Research*.
- A.K. Hughes, **R.D. Harold** & J.M. Boyer. (In press). Awareness of LGBT Aging Issues Among Aging Services Network Providers. *J. of Gerontological Social Work*.
- J. Ma, **P. Horner**, Y. Han, A. Grogan-Kaylor, J. Delva, & M. Castillo. 2012. Predictors of Discordance in Chilean Families. *Int. J. Child Adolescent Health* 2012:5(3), 00-00.
- P. Horner**, M. Castillo, J. Delva & N. Sanchez. (In press). Parental Perceptions of Neighborhood Effects in Latino Comunas: The Script of "the Delinquent" in Understanding Drug Use, Violence, and Social Disorganization. *Substance Use and Misuse*.
- P. Horner**, F. Andrade, J. Delva & A. Grogan-Kaylor. (In press). The Relationship of Birth Order and Gender with Academic Standing and Substance Use Among Youth in Latin America. *The J. of Individual Psychology*.
- A.K. Hughes** & K. Admiraal. (In press). A Systematic Review of HIV/AIDS Knowledge Measures. *Research on Social Work Practice*.
- A.K. Hughes**, **P.S. Horner** & **D. Vélez-Ortiz**. (In press). Being the Diversity Hire: Negotiating Identity in an Academic Job Search. *J. of Social Work Education*.
- J. Park & **A.K. Hughes**. (In press). Looking at Alternatives: Non-Pharmacological Treatments for Chronic Pain in Community-Dwelling Older Adults. *J. of the Am. Geriatrics Society*.
- A.C. Kennedy**, D. Bybee, S.J. Kulkarni & G. Archer. (In press). Sexual Victimization and Family Violence Exposure Among Urban, African-American Adolescent Women: Do Violence Cluster Profiles Predict Partner Violence Victimization and Sex Trade Exposure: Violence Against Women.
- A. Adams, D. Bybee, R. Tolman, C.M. Sullivan & **A.C. Kennedy**. (In press). The Impact of Intimate Partner Violence on Low-income Women's Economic Well-being: the Mediating Role of Job Stability. *Violence Against Women*.
- S.P. Kubiak**, N. Kasiborski, N. Karim & E. Schmittle. (Accepted). Does Subsequent Criminal Justice Involvement Predict Foster Care and Termination of Parental rights for Children Born to Incarcerated Women? *Social Work in Public Health*.
- A. C. Kennedy**, A. Adams, D. Bybee, R. Campbell, **S.P. Kubiak**, & C. Sullivan. (Accepted). A Model of Sexually and Physically Victimized Women's Process of Obtaining Effective Formal Help over Time: The Role of Social Location, Context, and Interventions. *Am. J. of Community Psychology*.
- T. T. Allen, E. Trzcinski & **S.P. Kubiak**. (In press). Public Attitudes Toward Juveniles Who Commit Serious Crimes: The Relationship between Assessments of Adolescent Development and Severity of Punishment. *Crime and Delinquency*.
- S.P. Kubiak**, M. Beeble & D. Bybee. (Accepted). Comparing the validity of the K6 When Assessing Depression, Anxiety and PTSD Among Male and Female Jail Detainees. *J. of Offender Treatment and Comparative Criminology*.
- S.P. Kubiak**, N. Nwaleuzi, N. Karim, C. Sullivan & M. Beeble. (Accepted). Examining Disclosure of Physical and Sexual Victimization by Method in Samples of Women Involved in the Criminal Justice System. *J. of Offender Rehabilitation*.
- R.M. Hock & **J.K. Mooradian**. (OnlineFirst/In press). Coparenting Quality Among Adoptive Mothers: contributions of Socioeconomic Status, Child Characteristics, and Adult Relationship Characteristics. *Child and Family Social Work*. DOI: 10.1111/j.1365-2206.2011.00775.x.
- J.K. Mooradian**. (OnlineFirst/In press). Breaking the Lock: Addressing 'Disproportionate Minority Confinement' in the United States Using a Human Rights Approach. *J. of Social Work*. DOI: 10.1177/1468017310380087.
- J. Riebschleger** & **D.L. Agbényiga**. (In press). Curriculum Planning for Increasing International Content in Social Work Education. *J. of Baccalaureate Social Work Education*.
- J. Seita**. (In press). Brain-Based Reasons for the Private Logic of Adult Wary Youth. *Reclaiming Youth: The Journal of Strength Based Interventions*.
- C. M. Donnell & **M.R. Sosulski**. (In press). Stark Realities: Examining African American Women with Mental Illnesses Balancing Employment in Recovery. *Am. J. of Psychiatric rehabilitation*.
- M.R. Sosulski**, C.M. Donnell & W. J. Kim. (In press). Disability and Receipt of Benefits Through Work in the U.S.: Evidence from the Longitudinal Study of the Vocational Rehabilitation Services Program (LSVRSP). *J. of Social Work in Disability and Rehabilitation*.
- M.R. Sosulski** & **A.T. Woodward**. (In press). African American Women Living with Mental Disorders: Factors Associated with Help-Seeking from Professional Services and Informal Supports. *Social Work and Public Health*.
- L. Bakk & **M.R. Sosulski**. (In press). Examining Gender and Racial Disparities Under the Medicare Prescription Drug, Improvement, and Modernization Act of 2003: Does Medicare Part D. Help? *J of Sociology and Social Welfare*.
- C. Edmonds Cady & **M.R. Sosulski**. 2012. Using Situated Learning to Foster Communities of Practice in Social Work Macro Practice Courses. *J. of Social Work Education* 48(1), 45-64.
- C. K. Belous, **T.M. Timm**, G. Chee & M. Whitehead. (In press). Revisiting the Sexual Genogram. *The Am. J. of Family Therapy*.
- D. Vélez Ortiz**, **S.L. Cross** & A. Day. (In press). Insightful Learning of Life's Lessons with Older Adult Guests in the Classroom. *Educational Gerontology*.
- ### Grants (external source)
- G. Anderson**, **S. Klein**, **M. Brock**, **K. Prout**, & **G. Archer**. 2011-present. In-Service and On-line Training for Child Welfare Caseworkers and Supervisors. Three-year state grant from the Michigan Department of Human Services to provide geographically accessible in-person and on-line professional training for child welfare caseworkers and supervisors located throughout the state and to evaluate effectiveness of training.
- G. Anderson**, **J. Riebschleger** (Consultant) & **C. Williams-Hecksel**. 2011. National Child Welfare Workforce Institute - Traineeship Programs.
- S. Cross** & **G. Anderson**. 2011. NCWWI Grant Coordinator of traineeship activity for the American Indian Initiative.

P.P. Freddolino. 1/1/2011-9/30/2012. Project Return Home: Evaluation Contract with Bethany Christian Services.

A.K. Hughes. 2011. Aging Women's Sexual Health and Provider Communication. Building Interdisciplinary Research Careers in Women's Health (BIRCWH). National Institutes of Health, K-12. MSU College of Human Medicine, Mary Nettleman, M.D. (PI).

S. Klein (Evaluator). 2011-2013. Los Angeles Child Welfare-Early Education Partners Infrastructure Project – Pilot Model for increasing access and linkage to high quality early care and education services for children 0-4 years old involved in the public child welfare system. PI - Dr. Todd Franke, University of California, Los Angeles School of Public Affairs.

S. Klein. 2011-present. Evaluation of a Data-Driven Approach for Reducing Racial Disproportionality in Michigan's Child Welfare & Juvenile Justice Systems. Two-year grant from the Michigan State Court Administrative Office to conduct a process and outcome evaluation of a state-level approach to assessing the scope and underlying causes of racial disproportionality within Michigan's child welfare and juvenile justice systems and the development and implementation of an intervention to reduce racial disproportionality in these systems.

S.P. Kubiak. 2011-2012. Cross Site Evaluation of Mental Health Courts in Michigan. Funded by the Michigan Department of Community Health.

A.T. Woodward. 9/2010-9/2011. Understanding Patterns of Service Use for Older Adults with Mental and Substance Disorders. Hartford Faculty Scholars Program in Geriatric Social Work.

Ongoing grants (external source)

G. Anderson, J. Riebschleger, C. Williams-Hecksel, & G. Archer. 2011. National Child Welfare Workforce Institute – Traineeship Programs.

K. Wilcox (PI), E. McGroarty, T. Curry, T. Bush, C. Luz & M. Roehling (Co-PIs). **D.L. Agbényiga** (Faculty Excellence Advocate—FEA). 2008-2013. National Science (NSF) ADVANCE Program—Advancing Diversity through the Alignment of Policies and Practice (ADAPP) at Michigan State University.

P.P. Freddolino. 1/1/2010-9/30/2012. Project Return Home—Process Evaluation.

L. Jackson, H. E. Fitzgerald, **R.D. Harold**, A. von Eye & Y. Zhao. 2005-011. An Ecological Systems Theory Approach to Examining the Impact of IT. National Science Foundation (NSF) Grant.

A.K. Hughes & R.D. Harold. 2010-2011. Greater Lansing Guide to Aging Services for the LGBTQI Community. Programs and Services Supporting the GBTQ1 Elderly Project. Lansing Association for Human Rights Grant.

S.P. Kubiak. 2010-2011. Assessing Female Sex Offenders Serving Time in State Prison. Michigan Department of Corrections.

S.P. Kubiak. 2009-2012. Evaluation of Enhanced Programming Aimed at Decreasing Violence for Women within the Michigan Department of Corrections. Michigan Department of Corrections.

S.P. Kubiak. 2011-2012. Regional Needs Assessment for Southeast Michigan Community Alliance.

S.P. Kubiak. 10/1/08-9/30/11. Evaluation of Mental Health Court Services in Wayne County. Michigan state Court Administrators Office and Detroit/Wayne County Community Mental Health.

S.P. Kubiak. 2011. Long Term Outcomes of an Urban Mental Health Court. Flinn Foundation of Michigan.

S.P. Kubiak. Awarded 2008. Open Doors to Safety: Capacity Building Grants for Domestic Violence Programs. Submitted by the Michigan Coalition against Domestic Violence to respond to the needs of incarcerated or formerly incarcerated women. Health and Human Services Family Violence Prevention Discretionary Grants.

J. Riebschleger & D. Willis. 2009-2012. A Proposal to Develop and test YES PLUS – A Psychoeducation Program for Children of a Parent with a Psychiatric Illness and Their Family Members. Direct applicant is the Guidance Center of Southgate, MI. Gerstack Foundation.

S. Bowden & J. Riebschleger. 2011-2012. Creating Inclusive Excellence at Michigan State University: Best Practices in Culturally Competent Research. MSU Office of Inclusion.

D. Vélez Ortiz. 2010-2012. Increasing Hispanic Representation in Neuroscience. National Institutes of Health.

Grants (MSU source)

H. Cho. 2011. Racial Differences in Intimate Partner Violence and Help Seeking Behaviors Among College Students: Data collection and analysis. Provost's Undergraduate Research Initiative, College of Social Science, Michigan State University.

P. Horner. 2011. Understanding the Stressors and Coping-Resiliency Mechanisms of Undocumented Latino Children and of Children of Undocumented Latino Parents in an Era of Increased Immigration Enforcement. Curtis Center Pilot Grant Award, University of Michigan.

P. Horner. 2011. Michigan Migrant Health Services Approaches to HIV/AIDS Prevention. Multi-ethnographic Study of Health Care Service Agencies in Michigan for Migrant Workers. Dr. Gwen Andrew Faculty Initiatives Fund, College of Social Science, Michigan State University.

P. Horner. 2011. Michigan Migrant Health Services Approaches to HIV/AIDS Prevention. Provost Undergraduate Research Initiative.

S.P. Kubiak. 2011. Pilot Testing a Therapeutic Intervention with Survivors of Domestic Violence. Faculty Initiative Fund, College of Social Science, MSU.

S.P. Kubiak. 2011. Developing an International Strategic Partnership Involving MSU's Violence against Women Research and Outreach Initiative, the Biodynamic Clinic of Killala, Ireland, and SAFE Ireland. MSU Center for Gender in Global Context.

Peer-reviewed presentations

D.L. Agbényiga & S. Barrie. 2011. Accessing and Understanding Perspectives of Disparity and Inequality as a Part of Ethical Research Practice with Refugee Populations. Council on Social Work Education 57th Annual Program Meeting, Atlanta, GA (October 2011).

D.L. Agbényiga, S. Barrie & V. Djelaj. 2011. Juxtaposition Between Parenting, Culture and Knowledge: Parental Roles and Cultural Dynamics in Refugee Families. Fourth International Conference on International Social Work, University of Southern California.

H. Cho. 2011. Examining Gender Differences in the Nature and Context of Intimate Partner Violence. Paper presentation for 57th Annual Program Meeting, Council on Social Work Education, Atlanta, GA (October 2011).

D.L. Agbényiga. 2011. Empowerment and Sustainable Development in the Aftermath of Disaster Panel. Topic: Social Network and Citizen Participation in Disaster Management. International Consortium for Social Development: Building Knowledge for Social Development Word Wide – 17th International Symposium (ICSD) Katherine A. Kendall Institute for International Social Work Education Panel, Dhaka, Bangladesh.

W. Kim & H. Cho. 2011. Ethnic Differences in Intimate Partner Violence Among Latino Americans: Comparisons Among Mexican, Puerto Rican and Cuban Americans. Paper presentation for 15th Society for Social Work and Research Annual Conference, Tampa FL (January 2011).

S. Cross, A. Day & J. Pung. 2011. Poster Session: Recruitment and Retention of American Indian/Alaskan Native Students in Social Work Programs. CSWE-APM, Atlanta, GA (October 29, 2011).

S. L. Cross. 2011. Moving from Academe to Art. 11th American Indian Alaska Native Social Work Educators' Association, Atlanta, GA (October 2011).

G. Baik & P. Freddolino. 2011. Technology and Seniors: Adoption and Sustainability. Paper presented at Aging in America 2011, American Society on Aging, San Francisco, CA (April 2011).

P. Freddolino, E. Godek & D. Wishart. 2011. Technology and Aging: How Technology Training Can Improve Advocacy for Older Adults.

Paper presented at Aging in America 2011, American Society on Aging, San Francisco, CA (April 2011).

D. Paone & P. Freddolino. 2011. Using Technology to Enhance Community Care and Connect to Primary Care. Paper presented at Aging in America 2011, American Society on Aging, San Francisco, CA (April 2011).

J. Adams, P. Freddolino & J. Holmes. 2011. Accreditation Issues in Social Work E-Learning and Distance Education. Panel presented at the CSWE Annual Program Meeting, Atlanta, GA (October 2011).

L.R. Mercier & R.D. Harold. 2011. GLBT Family Camp as Cultural Immersion for Social Work Students. Paper presented at the Annual Program Meeting of the Council on Social Work Education, Atlanta, GA (October 2011).

R. Martinez, R. Horner, C. Wylie. 2011. It is More than Speaking Spanish: Community-Based Research with Hispanics. Paper presented at National Outreach Scholarship Conference. Symposium Topic: community Engaged Research with Latino Communities Symposium Number 20, Michigan State University, East Lansing, MI (October 4, 2011).

A.K. Hughes, R.D. Harold & K. Admiraal. 2011. Awareness of LGBT Aging Issues Among Aging Services Network Providers. Paper presented at the Annual Program Meeting of the Council on Social Work Education, Atlanta, GA (October 2011).

A.K. Hughes, D. Vélez-Ortiz & A. Woodard. 2011. Chronic Illness and Functional Role Impairment in Older Adults: Examining Racial/Ethnic Differences. Presentation at the Gerontological Society of America's 64th Annual Scientific Meeting, Boston, MA (November 2011).

D. Vélez-Ortiz, A. Woodward & A.K. Hughes. 2011. Social Ties, Age Effects, and Self-Identification of Mental Health Services Needs Among Latino Older Adults. Presentation at the Gerontological Society of America's 64th Annual Scientific Meeting, Boston, MA (November 2011).

A.K. Hughes. 2011. Predictors of Provider Discussions of Sex and Sexual Health with Older Adults. Presented at Society for Social Work Research Annual Meeting, Tampa, FL (January 2011).

A.K. Hughes. 2011. Factors Influencing the Views that Aging Women have about Sexual Health Communication with the Health Care Providers. Presentation at the Eighth Annual Interdisciplinary Women's Health Research Symposium, Washington, DC (November 2011).

S. Klein & D. Merritt. 2011. Making Neighborhoods Safe for Children: Differences in the Relationship between Neighborhood Structure & Maltreatment Rates for Black, Hispanic & White Children. 15th Annual Conference of Society for Social Work & Research, Tampa FL (January 2011).

Continued on next page

S.P. Kubiak & J. Belknap. 2011. Navigating Institutional Review Boards (IRB): Issues and Dilemmas when Considering Research Involving a Protected Population. American Society of Criminology, Washington, DC (November 16-19, 2011).

S.P. Kubiak & C. Sullivan. 2011. Development of a "Best Practice" Toolkit for Criminal Justice and Domestic Violence Professionals Working with Abused Women Who Have Criminal Histories. American Society of Criminology, Washington, DC (November 16-19, 2011).

S.P. Kubiak, G. Fedock, W.J. Kim, D. Bybee & L. Tillander. 2011. Preliminary Outcomes Beyond Violence. Presentation at the Adult & Juvenile Female Offender Conference, Salt Lake City, UT (October 18, 2011).

G. Fedock, L. Fries & S.P. Kubiak. 2011. What Social Workers Need to Know About Working with Men and Women Involved in the Criminal Justice System. Council on Social Work Education, Atlanta, GA (October 2011).

E. Rivera, S.P. Kubiak, G. Fedock & W.J. Kim. 2011. Women's Use and Experience of Violence: How Gender and Context Matter. Presentation at the 13th Biennial Conference of the Society for Community Research and Action (Division 27 of the American Psychological Association, Chicago, IL (June 16-19, 2011).

J. Soback, S.P. Kubiak & E. Agius. 2011. Community Level Data for Underage Drinking and Drunk Driving. Symposium paper presented at the Society for Social Work Research, Tampa, FL (January 12-16, 2011).

S.P. Kubiak, A. Zeoli, L. Essenmacher & J. Hanna. 2011. Likelihood of Treatment Post-incarceration for Individuals with Co-occurring Disorders. Paper presented at the Society for Social Work Research, Tampa, FL (January 12-16, 2011).

K. Lee. 2011. Impacts of Child-care Arrangements on Australian Children's Cognitive and Socio-Emotional Developments: Moderation Effects of Parental Outcomes. Presented at the 12th Australian Social Policy Conference, Sydney, Australia (July 7, 2011).

R.M. Hock & J.K. Mooradian. 2011. Predicting Coparenting Quality Among Adoptive Couples. Society for Social Work Research Annual Conference, Tampa, FL (January 2011). Note: Prepared abstract and poster, but did not attend conference.

A. Day, J. Riebschleger & Z. Avila. 2011. Engaging Youth in Partnership for Social Change: Understanding Trauma and the Impact on Transition to Adulthood. Poster presented at the Annual Conference of the National Federation for Families for Children's Mental Health, Washington, DC (November 2011).

M. Jarry, J. Riebschleger & R. Sparre. 2011. The Journey of the Daughters and Sons: Baby Steps, Getting Stronger, and the "Road from Here." Annual Conference of the National Alliance for Mental Illness, Chicago, IL (July 2011).

C.K. Belous, M. Whitehead, G. Chee & T.M. Timm. 2011. "I don't want to be an 'Other'...": Revisiting the sexual genogram. National Council on Family Relations, Orlando, FL (November 2011).

T.M. Timm. 2011. Using Internal Family Systems Therapy in Sex Therapy. American Association for Marriage and Family Therapy Annual Conference, Fort Worth, TX (September 2011).

T.M. Timm & A.J. Blow. 2011. Working with Intense Emotions in Affair Recovery. American Association for Marriage and Family Therapy Annual Conference, Fort Worth, TX (September 2011).

C.K. Belous, M. Whitehead, G. Chee & T.M. Timm. 2011. Revisiting the Sexual Genogram. Michigan Association for Marriage and Family Therapy. East Lansing, MI (April 2011).

D. Vélez Ortiz. 2011. Mental Health Services Structure and Mental Health Perceptions Among Puerto Rican Older Adults in Senior Centers: A Comparative Mixed Methods Study. Critical Issues in Latino Mental Health Conference, Miami, FL (October 2011).

D. Vélez Ortiz. 2011. Mental Health Services Structure and Mental Health Perceptions Among

Puerto Rican Older Adults in Senior Centers: A Comparative Mixed Methods Study. American Public Health Association's 139th Annual Meeting, Washington, DC (October 2011).

R.O. Martinez, D. Vélez Ortiz & D. Espino. 2011. Framing Effects of Questions on End-of-Life Decisions Among Latino Older Adults. Society for Social Work Research. (January 2011).

Invited presentations

S.L. Cross. 2011. Workshop Presenter. Understanding Cultural Differences & the Experience. Continuing Education Program. E. Lansing Hannah Center, E. Lansing, MI (December 2011).

S.L. Cross & E. Proctor. 2011. Workshop Co-presenter. Understanding the Impact of Historical Trauma. The American Indian Communities: Building Culturally Resilient Services for Suicide Prevention & Treatment. MSU Continuing Education Program. American Indian Health and Family Services of Southeastern Michigan, Detroit, MI (November 2011).

K.E. Fort, S.L. Cross, D. Delcamp & S.K. Wetherholt-Brubaker. 2011. Invited Panelist Examining ICWA. Michigan State College of Law, E. Lansing, MI (November 2011).

S.L. Cross. 2011. Workshop Presenter. American Indian Grand Families and Social Work. American Indian and Alaska Native Heritage Month Celebration 2011. Department of Health and Human Services - Native American Affairs, State of Michigan, Lansing, MI (November 2011).

S. Cross, P. Day & H. Weaver. 2011. Invited Panelist. Best Practices in Recruitment and Retention of Native American Students. Council on Social Work Education Annual Program Meeting, Atlanta, GA (October 2011).

S. L. Cross. 2011. Workshop Presenter. U.S. Indian Boarding Schools: Policy of Oppression. School of Social Work, Wayne State University, Detroit, MI (October 2011).

S. Klein. 2011. The Community Context of Racial Disparities in the Public Child Welfare System. Michigan State University Human Development Initiative, East Lansing, MI (October 2011).

S. Klein. 2011. The Availability of Neighborhood Early Care and Education Resources and the Maltreatment of Young Children. Michigan State University Infancy & Early Childhood Interdepartmental Graduate Specialization Meeting, East Lansing, MI (May 2011).

S.P. Kubiak. 2011. Cumulative Trauma and Victimization among Women in the Criminal Justice System. Invited Presentation by Southeast Michigan Community Alliance, Ecorse, MI (July 18, 2011).

S.P. Kubiak. 2011. The Effects of Cumulative Trauma and Victimization on Survivors of Domestic Violence. Invited Presentation at the Michigan Coalition for Domestic and Sexual Violence Professional Development Institute (May 11, 2011).

S.P. Kubiak. 2011. Trauma Informed Services: Background and Skills. Invited Presentation at HAVEN, Pontiac, MI (June 16, 2011).

J.K. Mooradian. 2011. Common Humanity and Human Community: Melding Micro and Macro Social Work Through Expanded Human Rights Practice. Mary Barron Memorial Lecture, Michigan State University Continuing Education, Flint, MI (March 2011).

J. Riebschleger. 2011. Understanding and Supporting Children with a Parent with a Serious Psychiatric Illness. MSU School of Social Work Continuing Education, Owosso, MI (May 2011).

J. Riebschleger & C. Thams. 2011. Preventing Fires Among the Samplings: Putting Out Fires Among Children with a Parent with a Serious Mental Illness. Shiawassee County Family Services Providers Annual Conference, Owosso, MI (March 2011).

T.M. Timm. 2011. Treatment of Child and Adolescent Sexual Abuse. MSU School of Social Work Continuing Education, East Lansing, MI (February 2011).

D. Vélez Ortiz. 2011. Mental Health Issues in the Latino Population. MSU School of Social Work Continuing Education, East Lansing, MI (December 2011).

E.E. Whipple. 2011. Process Evaluation of a Relationship-Based Home Visiting Program to Decrease Tobacco Use Among At-Risk Pregnant and Parenting Women. MSU School of Social Work Faculty Research Presentation to Visiting Finnish Scholars (September 28, 2011).

A.T. Woodward, P.P. Freddolino, C.M. Blaschke-Thompson, D.J. Wishart, L. Bakk & R. Kobayashi. 2011. The Technology and Aging Project: Outcomes from a Randomized Field Trial. Paper presented at the Annual Conference for the Society for Social Work and Research, Tampa, FL (January 2011). **S**

Dr. Stocks retires from MSU faculty

After more than 17 years of service, **Dr. Timothy Stocks** retired from MSU and the faculty of the School of Social Work in May 2012. Dr. Stocks taught courses in social work practice and research. He was one of the first faculty members in the School to pioneer on-line courses and teaching. A former child welfare worker, he maintained an interest in child welfare, research methods and statistics, and social work ethics. Our best wishes to Dr. Stocks upon his retirement. **S**



Timothy Stocks

Here's what you're up to!

Dr. Louanne Bakk (PhD 2011) is an assistant professor of social work at the State University of New York–Brookport.

Valentina Djelaj (BASW 2011) had a paper published in *Advances in Social Work* based on the research she did with faculty member DeBrenna Agbényiga while she was here.

Shannon Marie Emery (MSW 2007) works as a medical social worker serving hospice patients and their families. She started this work while in graduate school and tried a couple of different settings after graduation, but she found she was happiest doing hospice work.

Ashley Harding (Dineh/Navaho), who interned with Dr. Suzanne Cross during work on her American Indian Studies program certificate, is working now as a community development specialist for the National Indian Child Welfare Association (NICWA) in Oregon.

Dr. Stephen D. Hart (MSW 1971) continues his psychotherapy and psychoanalytic practice in Greenfield, WI. He is also involved in research on the effects of positive psychology on mental-physical health and wellness.

Lynn D. Jefcoat (BASW 1971) is retired. She was employed as an agent, Criminal Investigations, Office of Inspector General, State of Michigan. She was also employed as a supervisor in the 2000 census. She has two sons who are also MSU graduates.

Justin Pung (BASW 2012) and **Luke Gogliotti** (BASW 2012) had a paper accepted for publication in the fall issue of *The New Social Worker* based on their research projects done with Dr. Suzanne Cross while they were seniors. The article is focused on undergraduate research, and the focus of the research is on conducting interviews and presentations on the topic of recruitment and retention of American Indian college students.

Wilhelmina Newsome Wright (MSW 1959) retired from Life Guidance Service of Grand Rapids. She occasionally provides social work services to Grand Rapids Home Health Care on request. **S**

Alumna honored with award



Fran Gau (MSW 1986) is one of the recipients of the *Second Annual Mid-Career Exemplary Social Work Leadership Award* of the National Association of Social Workers–New York City Chapter in recognition of her visionary and exemplary work.

Gau is assistant director of client services at the New York Asian Women's Center, which was founded in 1982 by a small group of volunteers from the Asian community who recognized that Asian immigrant women had nowhere to turn when faced with domestic violence. **S**



In memoriam...

Nancy Hanson (BASW 1972) passed away in April 2011 after a nine-year battle with breast cancer.

Amanda Rouse (MSW 2005), a graduate of our second Flint program cohort, passed away in June 2012 as a result of a terrible auto accident. She was a social worker for McLaren Visiting Nurses.



Connect with the School!



Find us by joining the group **MSU School of Social Work**. Are you a Flint MSW program grad? Join the **Michigan State University Flint MSW program alums** group! Or check out the **Michigan Kinship Care Resource Center**



Read the School's "tweets" at www.twitter.com/MSUSocialWork or connect with other Spartan social workers by joining the **MSUSocialWork** group.



Join by searching for **MSU School of Social Work** in the groups or visit the recently launched **College of Social Science** group at MSU College of Social Science.



Phi Alpha update

This fall, Phi Alpha has engaged volunteers to collect donations to support Volunteers of America's Veterans Program Thanksgiving dinner provided to local veterans. Participants assembled 15 food baskets from the donated and pre-bought items which were distributed to veterans by VOA employees.

Phi Alpha officers elected

President: **Sarah Shortt Williams** (MSW)
 Vice President: **Brittany Harvey** (BASW senior)
 Secretary/Treasurer: **Courtney Wilson** (BASW senior)

An active learning community continues to be a Phi Alpha priority, including study groups around the time of midterm and final exams. They plan to host a panel of graduate students to talk to undergrads about the MSW application process later this year.

Phi Alpha has also begun a formal mentoring program to connect first year social work major students at the BASW and MSW levels to a second-year student in their program. The intention of this initiative is to connect students and assist them with their studies through peer guidance toward ultimately improving educational performance, networking skills, and growth of students in Michigan State University's School of Social Work programs. **Brittany Harvey** is this year's mentor chair. **S**



SMCA AIDS Walk

Students for Multi-ethnic Community Action (SMCA) participated in the Lansing Area AIDS Network (LAAN) annual AIDS Walk; the 11 walkers raised over \$300. Thanks to senior **Kassandra Freeman** and MSW student **Jazmyn Holley** for their leadership. SMCA faculty adviser is **Rita Walters**.

Homies Giving 2012 extends reach to Lansing Community College students

On November 22, the 10th Annual Homies Giving dinner took place on the campus of Michigan State University. Begun by the School's student chapter of the **Organization of Latino/a Social Workers (OLASW)**,

this traditional American Thanksgiving dinner is provided free to the many students who are away from their homes and families at a time when the University cafeterias are closed.

This important tradition continued this year with new partner **LUCERO (Latinos Unidos con Energia Respeto y Orgullo)**, a student service organization from Lansing Community College, and for the first time LCC students were invited. Both OLASW and LUCERO look to enhance cultural awareness and promote positive change. It is a festive gathering of fellow students, alumni, professors, University administrators, and community members.

Thanks go to OLASW student leaders **Sophia Estrada** and **Isabel Zepeda** and faculty sponsor **Dr. Pilar Horner**; support was also provided by MSU's Office of Cultural and Academic Transitions. **S**

BASW student news

This year's diversity themed field trip was a weekend in Chicago packed full of experiences. Twenty-nine students took a bus to Chicago October 6 and 7 to tour diversity themed sites in Chicago.

Michael McFadden, vice president for clinical services at the Howard Brown LGBT Health Clinic in Wrigleyville, spoke to students on the good work they do supporting the mental and physical health needs of their clients. This was followed by a tour of the DuSable African American History Museum's art and historical exhibits.

On their way to Hull House on the University of Illinois Chicago campus, they witnessed the Chicago Marathon. The UIC pep band was at Hull House cheering on the runners, and students were joined by **Justin Pung** (BASW 2012), who is now pursuing his MSW at Loyola University in Chicago. Hull House continues to expand its exhibits about the life and times of Nobel Prize winner Jane Addams, and students saw the actual Nobel medal in a glass case in Addams' bedroom.

The trip concluded with a tour of the Mexican Fine Arts Museum's Day of the Dead Exhibit.

The student planners who made this trip run smoothly included seniors **Ashley Gonsler, Kristen Steiner, Kati Gradowski, Sophia Estrada,** and **Isabel Zepeda**. The trip was funded by donations and a grant from the School. **S**

Student awards and honors

Provost Undergraduate Research Initiative Grants, designed to provide undergraduates with an opportunity to work closely with faculty on major research projects, usually as part of the faculty member's own scholarly enterprises, were awarded to:

Senior **Angela Bedz** (Dr. Anne Hughes)
 Junior **Taylor Birman** (Dr. Kyunghee Lee)
 Senior **Amanda Freis** (Dr. Sheryl Kubiak)
 Senior **Megan Kelly** and junior **Michelle Kaiser** (Dr. Hyungkag Cho)
 Seniors **Alison Thierbach** and **Heather Foster** and juniors **Jennifer Campbell** and **Samantha Morgan** (Dr. Marya Sosulski)

College of Social Science Dean's Assistantships, for exceptional Social Science students conducting advanced mentored research projects that make a substantial contribution to scholarship, were awarded to:

Senior **Megan Fritsch** (Dr. Amanda Woodward)
 Senior **Allison Jahr** (Julie Navarre)
 Senior **Isabel Zepeda** (Dr. Daniel Vélez Ortiz)

Other awards:

MSW students **Jessica Ceh** and **Molly Ballantyne** (both BASW 2012) were awarded Phi Alpha Patty Gibbs-Wahlberg National Scholarships for excellence.

Senior **Megan McDonough** received CSWE's Ashley Brooks Danso Scholarship to attend the CSWE convention in Washington, DC, given to a student who has demonstrated career interest in gerontological social work.

Senior **Alison Thierbach** was chosen one of six University Undergraduate Research Ambassadors to publicize the benefits of doing research to various student constituencies on campus; she has been working with Dr. Marya Sosulski.

Students for Social Work (SFSW) worked with the **FAME** program to build a float and march in the Homecoming Parade carrying signs promoting diversity and staffing a table at the College of Social Science tailgate party. Thanks to seniors **Jenna Fuller, Erin Harned,** and **Kristen Steiner,** and juniors **Jenn Campbell** and **Lauren Kirk** for their leadership. SFSW faculty adviser is **Monaca Eaton. S**

FAME grows

We are pleased to welcome **Andrea Martineau** to the FAME program (Fostering Academics-Mentoring Excellence, formerly MSU Foster Youth Alumni Services). (See article on this page.) MSW student **Sarah Shortt Williams** serves as associate life skills coach and **Dr. John Seita** is program director.

The School of Social Work and FAME have received a grant from the Department of Human Services Youth in Transition program. Funding will support work by life skills coaches to help MSU youth aging out of foster care work on developing and improving independent living skills and succeed in their college experience. Students in the coaching program are also matched with a mentor for additional support and guidance.

The mentor program is growing substantially this year. AmeriCorps member and MSW student **Daniele Reisbig** is the new mentor/volunteer coordinator and has been working hard at recruiting mentors and coordinating the new FAME Student Activity Board.

FAME partnered with the School and Students for Social Work to host an event for the National Day of Community Service (held every year around 9/11). Working with the Red Cross, students made care packages for families affected by house fires.

MSU's fifth annual Spartan Remix cultural celebration, held September 6 at The Rock, was another venue for FAME activities. Foster alumni students who had never heard of the FAME program stopped by and signed up to be involved, and many students signed up to volunteer with the FAME program.

FAME has given out welcome baskets to many freshmen and distributed Finals Week Survival Kits. **S**



Social work students assembling care packages from donated items.



MSU and FAME graduate Julius Holmes poses with Sparty at Spartan Remix.

New life coach

Andrea Martineau will be providing individual coaching and supports to students that were once in the foster care system, a cause near to her heart; she started her social work career as a foster care case manager and knows the challenges and barriers this population experiences. She is excited to be able to contribute to the great programs and services that already exist in FAME and hopes to see the program expand and grow to better serve the foster care alumni at MSU. Andrea also serves as a group facilitator at Ele's Place and provides individual therapy services for refugee youth currently in the foster care system. Andrea earned her BASW at New York University's Silver School of Social Work and completed her MSW at Fordham University. A Lansing native, Andrea is proud to be joining the Spartan team. In addition to youth aging out of foster care, Andrea's interests include mental health, refugee and immigrant populations, training and retention of child welfare workers, trauma, and resiliency of trauma survivors. **S**



Andrea Martineau

Research Brown Bag Sessions, Fall 2012



Faculty members and PhD students have been sharing about their research and teaching strategies in regular informal lunchtime meetings to further build connections within the School.

- Sep. 24** **Amanda Woodward:** Using latent class analysis to better understand mental health service use (*Research*)
- Oct. 8** **Rita Walters:** Qualitative research: Researcher bias, misconceptions, trustworthiness, and influence (*Teaching*)
- Oct. 22** **Sheryl Groden:** Complimentary and alternative medicine (CAM): Comparing use between baby boomers and older adults (*Research*)
- Nov. 5** **Hailey Mooney:** Developing strategies for teaching undergraduates about library research (*Teaching*)
- Nov. 19** **SW990 Research Practicum Presentations:** Student-field instructor relationship and student self-efficacy (*Research*)
- Dec. 3** **Marya Sosulski:** Incorporating service learning and civic engagement into any/every course (*Teaching*)

Students provide perspective via Director's Advisory Committee

Eight of our students have an important responsibility: they serve on the Director's Advisory Committee. The purpose of the committee is to provide a student perspective through consultation with and advice to the director on matters that promote and support all aspects of the student experience at MSU School of Social Work. They meet three to four times a year. Members of the committee are:

BASW: Jennifer Campbell and Lauren Kirk.

MSW: Molly Ballantyne (East Lansing Advanced Standing program); Jazmyn Holley (East Lansing program); Kim Reese (Flint program); Levaughn Johnson (Oakland program); Jennifer Page (Saginaw program); and Josh Bishop (Statewide Blended program). **S**

School news in brief

Dr. Tina Timm has been promoted to associate professor from assistant professor, and granted tenure.

Dr. Anne Hughes has been reappointed as an assistant professor in the tenure system.

Associate Director for Field Education **JoAnn McFall** has been appointed chair of the Council on Field Education of Council on Social Work Education for a three-year term. This appointment includes a seat on the Commission on Educational Policy of CSWE.

BASW Coordinator **Sue Bowden** remains president of MABSWE, the association of Michigan BSW educators. She is also chair of the National Phi Alpha Honor Society Scholarship Committee

Dr. Suzanne Cross will have a chapter in *Survivors Voices: The Impact of the US BIA Boarding School System on Two Generations*, a book on colonialism and historical trauma in First Nations Native Communities.

Dr. Pilar Horner's work with qualitative research and cross-cultural collaborations was highlighted in the October 2012 *MSU Engaged Scholar E-Newsletter*. Horner works with Latino/Latina adults and youth.

Drs. Anne Hughes and **Rena Harold** were recognized in the September 2012 *MSU Engaged Scholar Magazine* for their research about LGBT older adults.

Drs. Anne Hughes, Pilar Horner, and Daniel Vélez Ortiz have an article, *Being the diversity hire: Negotiating identity in an academic job search*, in the Fall 2012 issue of Council on Social Work Education's *Journal of Social Work Education*. This study highlights challenges for minority faculty candidates and the work that still needs to be done to honor diversity and integrate it into a faculty and institution.

Dr. Sacha Klein with **James Hennessey**, MSW students **Jonathan Litt** and **Renee McLaurine**, and PhD student **Lauren Fries**, assisted the Saginaw County Disproportionate Minority Contact Committee complete a systematic assessment of the underlying cause(s) of racial and ethnic disproportionality in their child welfare and juvenile justice systems. They will be formally presenting this assessment at the end of the month, and the DMC will use the information to help determine what policy and program changes to make to reduce racial and ethnic disparities in these systems in Saginaw.

Dr. Sacha Klein contributed to an article in the US Department of Health and Human Services Administration for Children and Families May 2012 online digest *Children's Bureau Express*. Titled *Electronic Early Education Referrals*, it describes the Los Angeles Child Welfare-Early Care Systems Infrastructure Project. The Project is a partnership between UCLA, the Los Angeles County DCFS, the LBUSD Head Start/Early Head Start program, the Michigan State University School of Social Work (project evaluator), and various early childhood and family support service providers in Long Beach, CA.

Doctoral candidate **Rita Walters** presented *Adjustment and Coping of African American Parents of Children with Severe Cerebral Palsy* at the Association of University Centers on Disabilities (AUCD) 2012 Conference.

Dr. Pilar Horner completed the annual 5K Fun/Walk for Vision Builders, a US-based nonprofit that partners with communities and agencies in all parts of the world to improve the lives of children. This year funds were raised to build an orphanage and medical center near the heart of the Varanasi Nadesar Slum in India. **S**



Cultural competence is focus of "Culture Shock"

The School's Diversity Committee, with leadership from MSW student **Jazmyn Holley**, sponsored a "Culture Shock" event designed to address cultural misconceptions and educate groups on cultural competence. **Hyunkag Cho, Ron Hall, and Monaca Eaton** hosted this event in their classes. It was presented by Cultural Competence LLC, an organization established to increase diversity awareness by exposing cultural stereotypes and misconceptions while using an educational and entertaining experience. They work to promote inclusion and equity on college campuses while supporting university efforts to enhance diversity awareness and cultural understanding among the campus community. The MSU Office for Inclusion and Intercultural Initiatives expressed an interest in making this a University event in the future. **S**



Michele Brock and her husband Randy Sly recently welcomed Spartan twins Henry Harlow and Violet Shay.

School represented well at 58th Annual CSWE event



School faculty and students participated in the Council on Social Work Education's (CSWE) 58th Annual Program Meeting (APM), *Social Work: A Capital Venture*, held in Washington, DC, this November. APM is the premier national meeting in the social work education field and is the largest gathering of its kind. MSU Social Work faculty and students participated in a variety of roles:

Presentations:

Dr. Hyungkag Cho: *Dating violence and help-seeking behaviors among college students* (poster)

Dr. Hyungkag Cho: *Stressors, coping resources, and physical/mental health problems among Korean immigrants* (research partnership)

Lauren Fries (PhD student), **Molly Ballantyne** (MSW student), and **Dr. Sacha Klein:** *An Examination of School Mobility and Quality among Children in Foster Care* (paper)

Dr. Lihua Huang (clinical assistant professor): *Changes in Family Caregiving in Later Life: A Mixed-Methods Study* (paper)

Panels:

Dr. Gary Anderson was on the panel titled: *Child Welfare Education and Practice: A Centenary Celebration of the Children's Bureau*.

JoAnn McFall (associate director for field education), as chair of the Council on Field Education of CSWE, organized a 90-minute session at CSWE for all field directors titled: *Connecting with Field Education: Sharing Best Practices*.

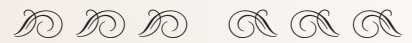
Honors:

Dr. Rena Harold is a commissioner on the CSWE Commission on Membership and Professional Development.

Dr. Paul Freddolino has been asked to represent CSWE on a new task force led by the Association of Social Work Boards charged with updating the NASW Standards for Technology in Social Work Practice. **S**



MSW student Molly Ballantyne (BASW 2012) pictured (left) with national Phi Alpha executive secretary Tammy Hamilton, was recognized at the CSWE convention for her work to help establish the Phi Alpha Patty Gibbs-Wahlberg National Scholarship Program.



School loses three very special friends

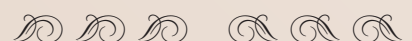


Dorothy Gonzales

Social worker **Dorothy Gonzales**, a member of the MSU Board of Trustees (1993–2008) and a social work practicum instructor for the School, died in May 2012 at the age of 68. She was retired from her position as director of multicultural services in the Michigan Department of Mental Health. MSU President Lou Anna K. Simon called Gonzales “a tireless advocate for first-generation students and students of color, for whom education is a challenge” and went on to say, “Gonzales provided inspiration and a guiding hand to countless students during her long tenure on the board. She will long be remembered for her spirit and personality, and her generosity and kindness.” The School has lost a wonderful friend and advocate for social work.



William Memberto from the Little River Band of Ottawa and Chippewa Indians was involved with child welfare for many years and recently helped the MSU School of Social Work host its Michigan Indian Day celebration in Manistee. A social worker, Bill earned his BSW from Ferris State University and MSW from Grand Valley State University. Bill spent many years working in social work and around Native American issues; his passion was Indian child welfare and he was a long-time advocate and champion for Native American families, children, and tribal rights.

Stephen Yanca, professor of social work at Saginaw Valley State University, has died after a five-month battle with cancer. Steve earned his BA in psychology at MSU and his MSW at Wayne State University. A social worker most of his life, he began as a juvenile case worker; he joined the SVSU BSW faculty in 1991. Steve was also a clinical instructor at the MSU School of Social Work. He has written four social work text books. A true Spartan fan, his coffin was draped in the school's flag during his funeral. **S**



How to donate to the MSU School of Social Work online

This is a new feature for the School, but it is very similar to making other payments/contributions online.

- 1 Go to the School's website: www.socialwork.msu.edu.
- 2 At the right hand bottom of the page, click on .
- 3 After a brief narrative, there are two general giving options, under "Make Your Gift," presented in two boxes: online donations "By Credit Card Now" and instructions "By Check," which would be via regular mail.
- 4 In the "By Credit Card Now" option, two funds are identified: the "School of Social Work Endowed Discretionary Fund" (funds are accumulated to generate interest income that is used to support students, student scholarships, and programs) and a "School of Social Work Development Fund" (funds go directly to an intended purpose rather than being held in an endowed account).
- 5 Click on one of these fund names.
- 6 You will be presented with a Michigan State University donation page identifying a number of programs and logos—*ignore* the fancy display and just look at the upper right hand corner under the dark green stripe.
- 7 In the upper right hand corner (it may be blinking) there will be a small box labeled "Gift Cart" listing the fund you selected and a space to enter the amount you would like to donate. The endowed fund will have a red  in the corner; the discretionary fund will not.
- 8 After you enter the amount and select either "donor" or "couple" in the box labeled "Gift Credit," go to the page bottom and click "Continue."
- 9 This next page will look familiar—it asks for your name, address, and e-mail. Not all areas are required, and this will look very similar to shopping online!
- 10 As you scroll down, you will be asked to choose a payment method (which type of credit card), and it will ask for the card number, security code, and expiration date; again this should feel familiar to an online purchaser!
- 11 Once you see the "Thank you for your Donation" notice, you are done! A confirmation will be sent to your e-mail, and it will be identified as "Michigan State University" on your credit card statement.

The School and University will acknowledge your gift and provide a receipt for tax purposes.

Give it a try! Thank you!!

Thank you to our generous donors

Advocacy, Leadership and Social Justice Endowed Fund
The Kate & Richard Wolters Foundation

Excelsior Fund: The Allah Rakha Shamoon Scholarship Fund
Zafar Shamoon & Nadia Yusuf

Chance at Childhood Endowment
Shannon K. Duvall

Chance at Childhood Clinic Endowment
Linda M. French

Diane Levande Endowed Fund for Work with Older Adults
Robert & Janet Bridgham
James & Diane Levande

Dr. Mary Bremer Barron Endowed Scholarship Fund
Gary & Valerie Anderson
Richard Barron
David & Kathleen Bremer
Heidi A. Bremer-Koelper
Julie K. Farman
Stephen & Victoria Fitton
Anne K. Hughes

Foster Child Endowed Scholarship Fund
Cheryl R Armstrong
Perry & Margaret Gregory
Jon & LeAnn Peterson
Andrea L. Wulf

Gary R. Anderson Fund in the School of Social Work
Gary & Valerie Anderson

Henry-Lane Endowed Scholarship Fund
Rena Harold

Mary Lou Jenks Memorial Fund
John & Kathleen Herrick
Lucy Mercier & Linda Campbell

MSU Foster Youth Camp
Gary & Valerie Anderson
Thomas D. Chirgwin/Comerica Inc.
Lana G. Dart
James & Stephene Diepstra
Patrick & Victoria Essenmacher
First Presbyterian Church of Birmingham

Perry & Margaret Gregory
James & Patricia Hennessey
John & Leslie Lynch
Mark J. Makoski/MSU Alumni Club of Eastern Wayne
Marylin Maxson
Benjamin & Melanie McGuire
Helen L. Riendeau
Lisa H. Rutledge
John & Cynthia O'Neill Shinsky
Katherine C. Ward
Craig Wulf & Diana Warmann
St. Paul Evangelical Lutheran Church

Paul P. and Donna K. Freddolino Endowment for Distance Education
Paul & Donna Freddolino

Richard D. Gardner Memorial Scholarship Fund
David & Constance Knaggs

Robert L. Little Scholarship Fund
Rosemary P. Jackson
David & Constance Knaggs

Roberta C. Stone Fund
Sally Rypkema & Tim Allen

Ruth T. Koehler Professorship in Children's Services
Stephen & Victoria Fitton

School of Social Work
Mark & Alice Alcorn
The American Endowment Foundation – Donor Advised Funds

Gary & Valerie Anderson
David & Kay Aughton
Martha A. Beuerle
Jeremy & Danielle Blaney
Robert Cox & Leslie Cox-Bourassa
Michael & Susan Bowden
David & Ann Bucheck
Kyle D. Caldwell/Michigan Nonprofit Association
Hyun Kag & Myung Ran Cho
Gina M. Coopersmith
Suzanne Cross & James Colthorp
Ceverena E. Davies
John & Ann Davis
Mara Davis
Gery & Vickie Dillon
Margaret A. Dimond
James & Sandra Dunn
Clark W. Etterman
Gerald & Karen Faloon
Jennifer L. Farley-Gillay

Julie K. Farman
David Figg & Jill Brown
Stephen & Victoria Fitton
Charles & Helen Foster
Calvin & Cara Frappier
Lynelle Girton-Thrasher
Geoffrey Goodyear & Ellen Hovey-Goodyear
Harold & Geraldine Hart
Michael Head & Mary James
Phillip Hecksel & Cheryl Williams-Hecksel
Christine B. Herman
Karen J. Hoover
Kristin S. Huber
Katrina L. Humphreys
Margaret A. Innis
Kristina L. Johnson
Brian & Natalie Kasiborski
Terry M. Keller
Lee & Nancy Kronenberg
Michael & Sheryl Kubiak
Corinn L. Lafave-Denay
Carla J. Lambarth
Teme Levbarg
James & Beverly Luzadder
Samuel & Janet Marano
Euretta G. McAllister
James & JoAnn McFall
Debra M. Moray
Nate & Emily Mosher
Julie A. Navarre
Margaret O. Nielsen
Ruth A. Pemberton
Douglas Peterson & Maureen Moloney
David & Joanne Riebschleger
John & Lori Seita
Randall Sly & Michele Brock
Marya Sosulski & David Finet
Kimberly Steed-Page
Lisa M. Thiel
Steven & Adrienne Tilton
Monica M. Trojniak
Kathleen M. Turner
Ralph & Demetria Watson
Miriam Winnig/In memory of Robin N. Hoehler
Amanda T. Woodward

Veterinary Social Work Endowment Fund
Maurice & Nan Barone
Fidelity Investments
Linda L. Lawrence
William Scull & Rebecca Martin-Scull
Brian & Barbara Menlen/In honor of Sally Lloyd

Visit the School on the web: www.socialwork.msu.edu

S

Fall 2012/Winter 2013 News

Writer and editor: Toby Salzman, LMSW, ACSW
Graphic design: Rose Homa Design
Printer: Aldinger, Inc.

This newsletter is printed on FLO Dull Text, which is 10% post-consumer waste, using 100% vegetable-based inks. All production waste is recycled. Please recycle after reading.

MSU School of Social Work
Baker Hall
655 Auditorium Road, Room 254
East Lansing, MI 48824

Nonprofit Org.
US POSTAGE
PAID
East Lansing MI
Permit No. 21

MICHIGAN STATE
UNIVERSITY

School of Social Work

Advancing Knowledge. Transforming Lives.

OUR MISSION: We are dedicated to educating students for competent, responsive, and ethical social work practice. Our teaching, research, and outreach seek to promote positive change and social justice for diverse communities, organizations, groups, families, and individuals.

Help us stay connected!

Please e-mail us your e-mail address! Our address is socialwork@ssc.msu.edu — What's yours?

E-MAIL ADDRESS:

Current name _____ Circle degree earned: BASW / MSW / PhD

Name when enrolled _____ Year of graduation _____

Current address _____ Home phone _____

City/state/zip _____ Business phone _____

Please check here if this is a new address

Business/employer (optional) _____

Business address _____ City/state/zip _____

Briefly describe your professional activities and other information you want your classmates to know

Notes from Alumni will be featured in the *Fall 2013/Winter 2014 News*.

Please send this form to: MSU School of Social Work
Baker Hall
655 Auditorium Road, Room 254
East Lansing MI 48824



or e-mail: socialwork@ssc.msu.edu
School website: www.socialwork.msu.edu